

TECHNICAL DRAWINGS

JSC VERTICLAD Vertical Shiplap Weatherboards Rigid Underlay 20mm Cavity Fix

ISSUE : 24/02/2025 | VERSION : 2.5



Eastern Beach Home | Matt Brew Architect
Photo: Jamie Cobel

CodeMark
CMNZ30084



SCAN IT FOR MORE
INFORMATION

| | |
|---------------------------------|--------------------------|
| DRAWING SCALE NTS | ISSUE DATE 24/02/2025 |
| DRAWING NUMBER JSC 20CR VS01 | VERSION 2.5 |

INDEX

ISSUE : 24/02/2025 | VERSION : 2.5

| Sheet Number | Sheet Title |
|----------------|---------------------------------------|
| JSC 20CR VS01 | COVER SHEET |
| JSC 20CR VS02 | INDEX |
| JSC 20CR VS03 | GENERAL NOTES |
| JSC 20CR VS04 | RELATED DOCUMENTS |
| JSC 20CR VS10 | Window Head Detail |
| JSC 20CR VS11 | Window Sill Detail |
| JSC 20CR VS12 | Window Jamb Detail - Scriber |
| JSC 20CR VS13 | Window Jamb Detail - No Scriber |
| JSC 20CR VS30 | Square Utility Head Detail |
| JSC 20CR VS31 | Square Utility Sill Detail |
| JSC 20CR VS32 | Square Utility Jamb Detail |
| JSC 20CR VS40 | Weatherboard Scarf Joint |
| JSC 20CR VS41 | Vertical Control Joint |
| JSC 20CR VS42 | Base of Wall, Concrete |
| JSC 20CR VS43 | Base of Wall, Timber |
| JSC 20CR VS44 | Pipe Penetration |
| JSC 20CR VS50 | External Corner - J40 |
| JSC 20CR VS51 | 3D - External Corner - J40 |
| JSC 20CR VS52 | External Corner - APJC5 |
| JSC 20CR VS53 | 3D- External Corner - APJC5 |
| JSC 20CR VS54 | External Corner - J42 |
| JSC 20CR VS55 | 3D - External Corner - J42 |
| JSC 20CR VS60 | Internal Corner - J44 |
| JSC 20CR VS61 | 3D - Internal Corner - J44 |
| JSC 20CR VS62 | Internal Corner |
| JSC 20CR VS63 | 3D - Internal Corner |
| JSC 20CR VS64 | External Corner - Box Corner |
| JSC 20CR VS65 | 3D - External Corner - Box Corner |
| JSC 20CR VS70 | Base of Wall, Membrane Roof |
| JSC 20CR VS71a | Parapet Saddle Flashing - Stage One |
| JSC 20CR VS71b | Parapet Saddle Flashing - Stage Two |
| JSC 20CR VS71c | Parapet Saddle Flashing - Stage Three |
| JSC 20CR VS71d | Parapet Saddle Flashing - Stage Four |
| JSC 20CR VS75 | Parapet Detail |
| JSC 20CR VS77 | Decorative Bracket - Batten Detail |
| JSC 20CR VS80 | Inter Storey Joint |
| JSC 20CR VS81 | Apron Flashing Roof To Wall Junction |
| JSC 20CR VS82 | Soffit Detail at Wall |
| JSC 20CR VS83 | Soffit Detail at Fascia |
| JSC 20CR VS84 | Raking Soffit at Wall |
| JSC 20CR VS85 | Gable Soffit Detail at Wall |
| JSC 20CR VS90 | Weatherboard Fixing -Plan View |
| JSC 20CR VS91 | Weatherboard Fixing - Cross Section |
| JSC 20CR VS92 | Apron Flashing Gutter to Wall |

CodeMark
CMNZ30084**JSC** PREMIUM ARCHITECTURAL
& BUILDING SOLUTIONSjsc.co.nz
TechHelp@jsc.co.nz | (09) 412 2812**TYPE**
VERTICAL SHIPLAP WB - 20mm CAVITY FIX**NAME**
INDEX

- TO BE READ IN CONJUNCTION WITH COMPLETE JSC VERTICLAD SYSTEM LITERATURE
- DETAILS MAY BE SUBJECT TO CHANGE WITHOUT NOTICE

SCAN IT FOR MORE
INFORMATION

| | |
|---------------------------------|--------------------------|
| DRAWING SCALE NTS | ISSUE DATE 24/02/2025 |
| DRAWING NUMBER JSC 20CR VS02 | VERSION 2.5 |

GENERAL NOTES

ISSUE : 24/02/2025 | VERSION : 2.5

OVERVIEW :

JSC VertiClad is a cavity based external wall cladding system comprising of:

- Timber weatherboards finished with high quality exterior grade coating
- H3.2 treated timber castellated cavity battens
- Fascia boards and moulding profiles

This documentation covers the installation guide for fixing JSC Vertical Shiplap weatherboards over JSC-U 20mm thick castellated cavity battens.

SCOPE OF USE:

- This document is for use within the scope of JSC VertiClad Vertical Shiplap Weatherboard Cladding System technical documentation and Code Compliance CodeMark certificate CMNZ 30084.
- For scope, conditions and limitations of use refer to CodeMark certificate [CMNZ 30084](#).
- Details are subject to change without notification and only the current version is compliant. Refer to jsc.co.nz at the time of use for the current documentation.
- The designer/specifier must be satisfied that these details are applicable for their intended use.

FIXING SPECIFICATION:

- Western Red Cedar, Alaskan Yellow Cedar, Radiata Pine and Nordic Pine: Fixing material to be 316 Stainless Steel or Silicon Bronze annular grooved nails
- TMT (Thermally Modified Timber): TMT Taiga, TMT Taxon, TMT Tuscan, TMT Amba, and ThermoPine: Fixing material to be 316 Stainless Steel or Silicon Bronze annular grooved nails
- For the use of any alternative fixing of equivalent properties refer to [E2/AS1 Table 24](#) and to [E2/AS1 Table 20](#) for alternative material selection.
- JSC recommends nail materials as per [VertiClad Installation Guide Table 3 - Nail Fixings](#), as they will at least match the expected life of the cladding. E2/AS1 allows the use of galvanised fixings, although JSC does not endorse their use.
- Jolt head nails are only suitable for paint finished weatherboards.
- For buildings located in exposure 'Zone D', 316 stainless steel fixings must be used as per [NZS 3604:2011](#).

PRE INSTALLATION:

- Weatherboards must be dry and free of any contamination.
- Board lengths must be optimised prior to the installation to avoid any unnecessary wastage and joints.
- Any loose, bark encased knots, or other timber defects need to be removed.
- Weatherboards must be coated with suitable exterior coating on all sides in accordance with coating manufacturer's specification.

INSTALLATION:

- JSC VertiClad System must be installed by a suitably qualified and experienced trade person. Where Restricted Building Work (RBW) applied the installer shall be a Licensed Building Practitioner (LBP) or supervised by LBP.
- Compatibility of materials as per [Tables 20-22 E2/AS1](#).
- Rigid and flexible underlay as per [Table 23](#) and [Clauses 9.1.5 to 9.1.7 E2/AS1](#) or proprietary approved alternative.
- The weatherboard system shall incorporate joinery that meets the requirements of New Zealand Building Code for the relevant building wind zone or wind pressure.
- Where weatherboards have an exposed bottom edge, the back of the boards should be cut with a 15° drip edge and the cut end should be coated to 150-200mm up from the bottom edge.
- Cavity closer/vermin proofing must be installed continuously around the bottom of the cavity positioned to give a 15mm min. drip edge to cladding.
- Cavity closer/vermin proofing openings must be kept clear and unobstructed to maintain draining and venting of the cavity.
- Windows and doors to be installed as per manufacturer's specifications, head flashing stop ends must be in place. Flashings as per [Clause 4.0 E2/AS1](#).
- Flashings as per [Clause 4.0 E2/AS1](#) at corners, doors, windows and wall intersections must be installed to prevent water from crossing the cavity.
- Sealant to be compatible with the final coating system and to be applied as per manufacturer's instructions and specifications. For JSC Coating products refer to [JSC Coatings Wood Oil Range Guide](#).

MAINTENANCE:

- Annual inspection and cleaning followed by repair to any damaged areas. Refer to [JSC Maintenance Guide](#).

CodeMark
CMNZ30084



jsc.co.nz
TechHelp@jsc.co.nz | (09) 412 2812

TYPE
VERTICAL SHIPLAP WB - 20mm CAVITY FIX

NAME
GENERAL NOTES

• TO BE READ IN CONJUNCTION WITH COMPLETE JSC VERTICLAD SYSTEM LITERATURE
• DETAILS MAY BE SUBJECT TO CHANGE WITHOUT NOTICE



SCAN IT FOR MORE
INFORMATION

| | |
|---------------------------------|--------------------------|
| DRAWING SCALE NTS | ISSUE DATE 24/02/2025 |
| DRAWING NUMBER JSC 20CR VS03 | VERSION 2.5 |

RELATED DOCUMENTS

ISSUE : 24/02/2025 | VERSION : 2.5

- MBIE NZ Building Code Clause E2 External Moisture (refer to [E2 External moisture](#))
- Department of Building and Housing (DBH). [Constructing cavities for wall claddings](#)
- BRANZ Bulletin BU468 [December 2005] Fixing Timber Weatherboards (refer to www.branz.co.nz/BU468)
- [BRANZ \[May 2015\] Good Practice Guide: Timber Cladding](#)
- [BRANZ Build 154-33- Build Right Structurally Fixed Cavity Battens](#)
- [BRANZ Build 173-28- Build Right Coatings for Timber Weatherboards](#)
- [BRANZ Bulletin BU531 \[February 2011\] Designing for Thermal and Moisture Movement](#)
- Window & Glass Association NZ - WGANZ (www.wganz.org.nz)
- [NZS AS 1720.1:2022](#)
- [NZS 3604:2011 Timber-framed buildings](#)

Disclaimer: It is the responsibility of the designer/specifier to ensure the suitability and specification of any third-party accessories used with our cladding system. JSC is not liable for the installation of any components or accessories not supplied by us. For guidance on using specific components, please refer to our Technical Installation Details and Installation Guides. If there is any uncertainty, please seek expert advice.

The related documents mentioned above were accurate and up to date at the time of writing this guide. However, please note that information may have changed since then, and we recommend verifying any external sources for the most current information.

CodeMark
CMNZ30084

JSC PREMIUM ARCHITECTURAL
& BUILDING SOLUTIONS

jsc.co.nz
TechHelp@jsc.co.nz | (09) 412 2812

TYPE
VERTICAL SHIPLAP WB - 20mm CAVITY FIX

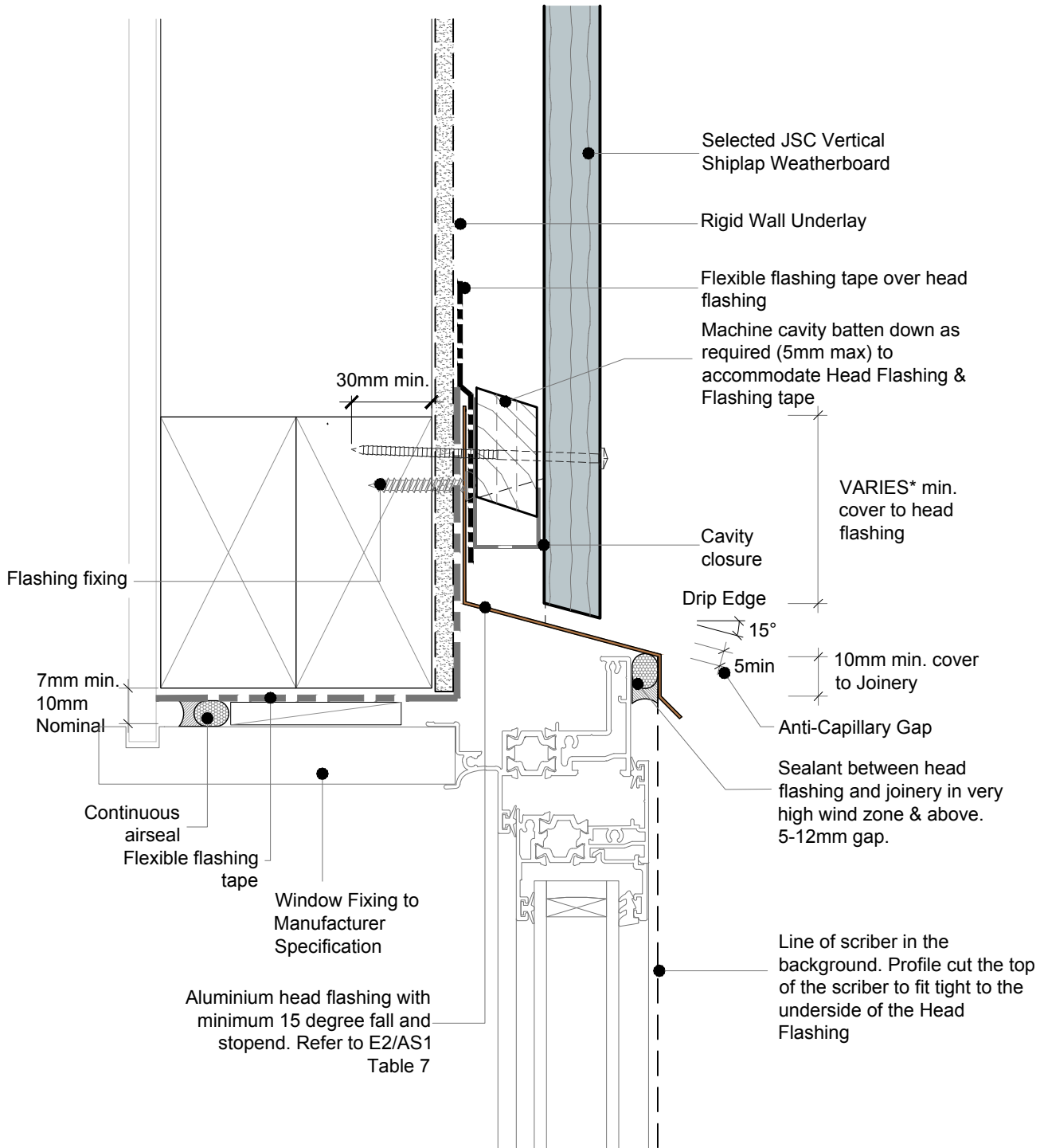
NAME
RELATED DOCUMENTS

- TO BE READ IN CONJUNCTION WITH COMPLETE JSC VERTICLAD SYSTEM LITERATURE
- DETAILS MAY BE SUBJECT TO CHANGE WITHOUT NOTICE



SCAN IT FOR MORE
INFORMATION

| | |
|---------------------------------|--------------------------|
| DRAWING SCALE NTS | ISSUE DATE 24/02/2025 |
| DRAWING NUMBER JSC 20CR VS04 | VERSION 2.5 |



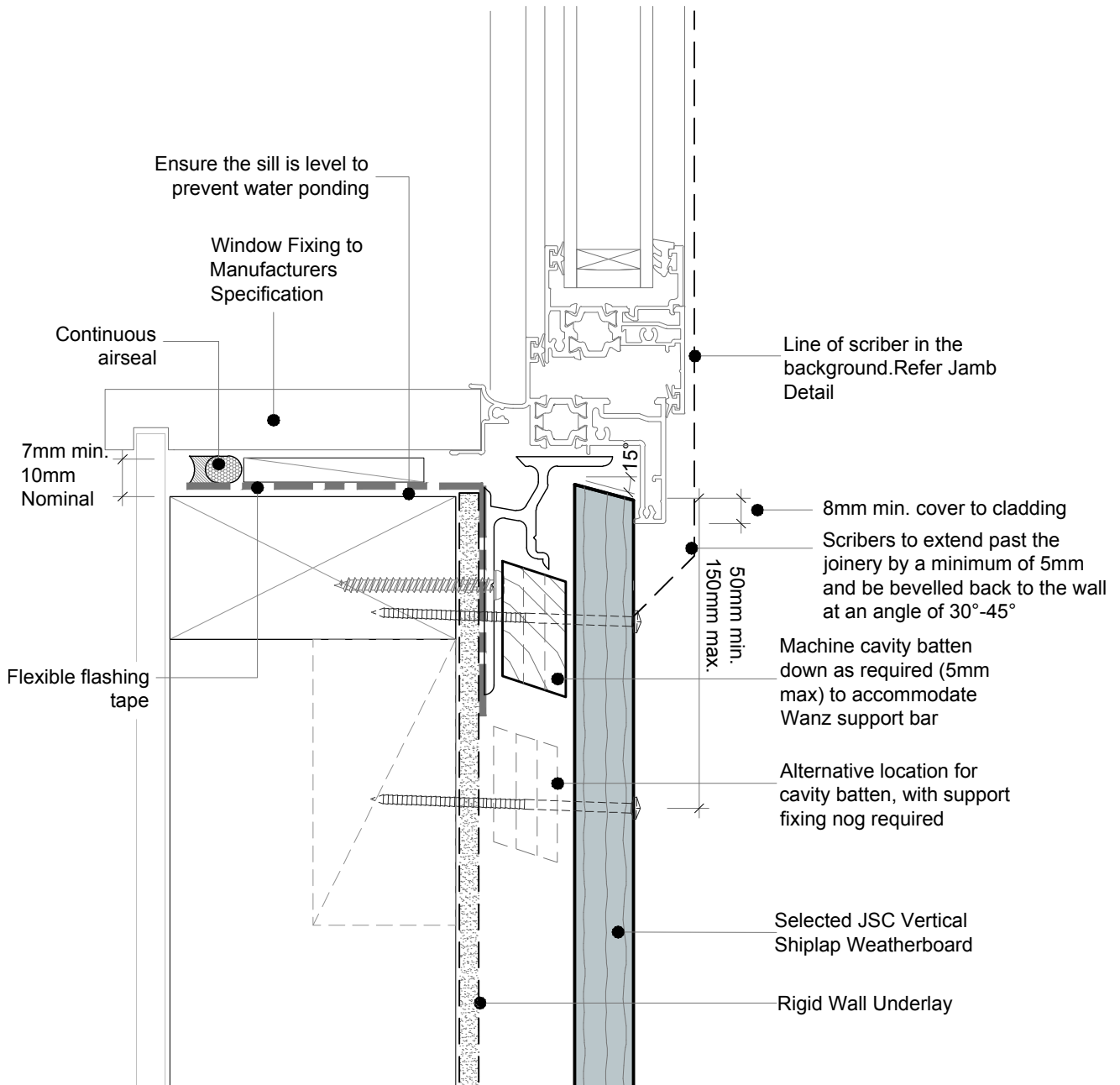
NOTE: In this situation, ensure a minimum penetration of 30mm into the timber frame due to the presence of multiple elements, including cavity batten, flashing tape, cavity closure, and head flashing.

*JSC recommends no hooks or hems. Therefore, the flashing upstand dimensions must be increased by 25 mm in accordance with E2/AS1, Section 4.5.1

• TO BE READ IN CONJUNCTION WITH COMPLETE JSC VERTICLAD SYSTEM LITERATURE

CodeMark
CMNZ30084

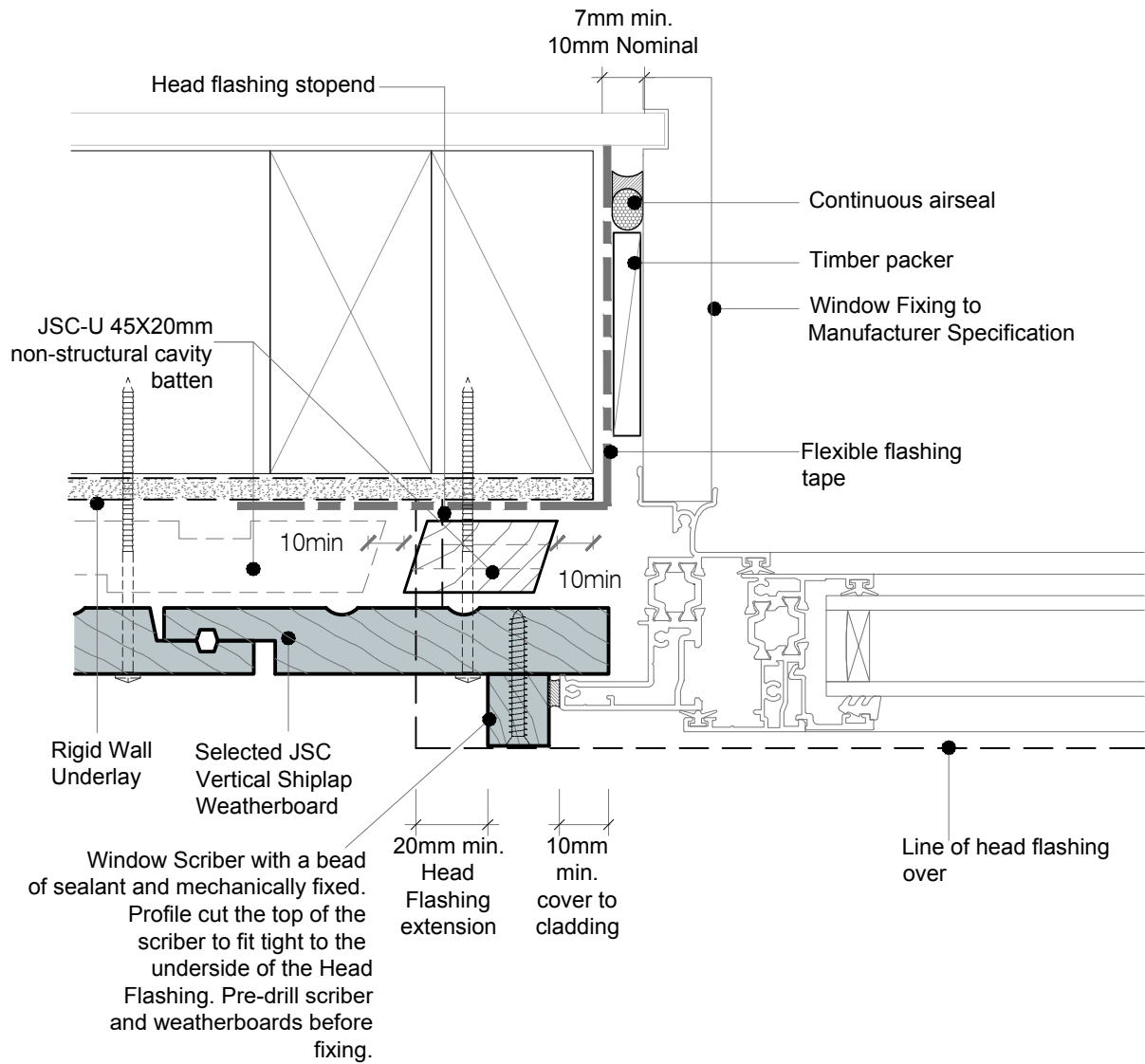




• TO BE READ IN CONJUNCTION WITH COMPLETE JSC VERTICLAD SYSTEM LITERATURE

CodeMark
CMNZ30084



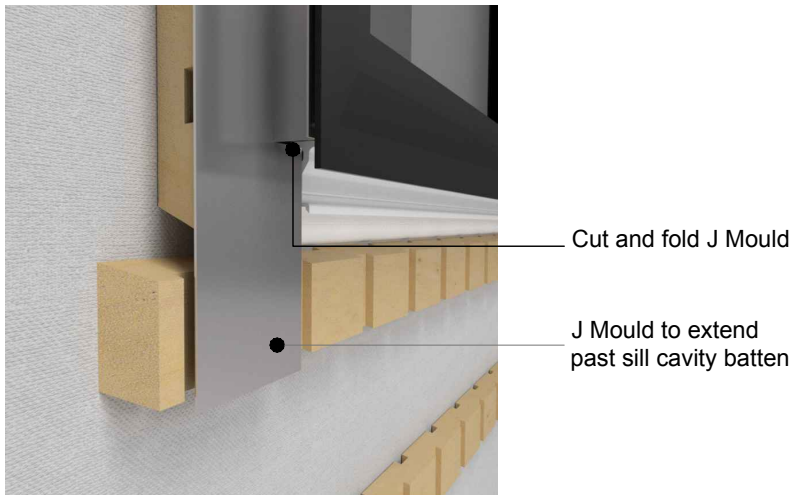
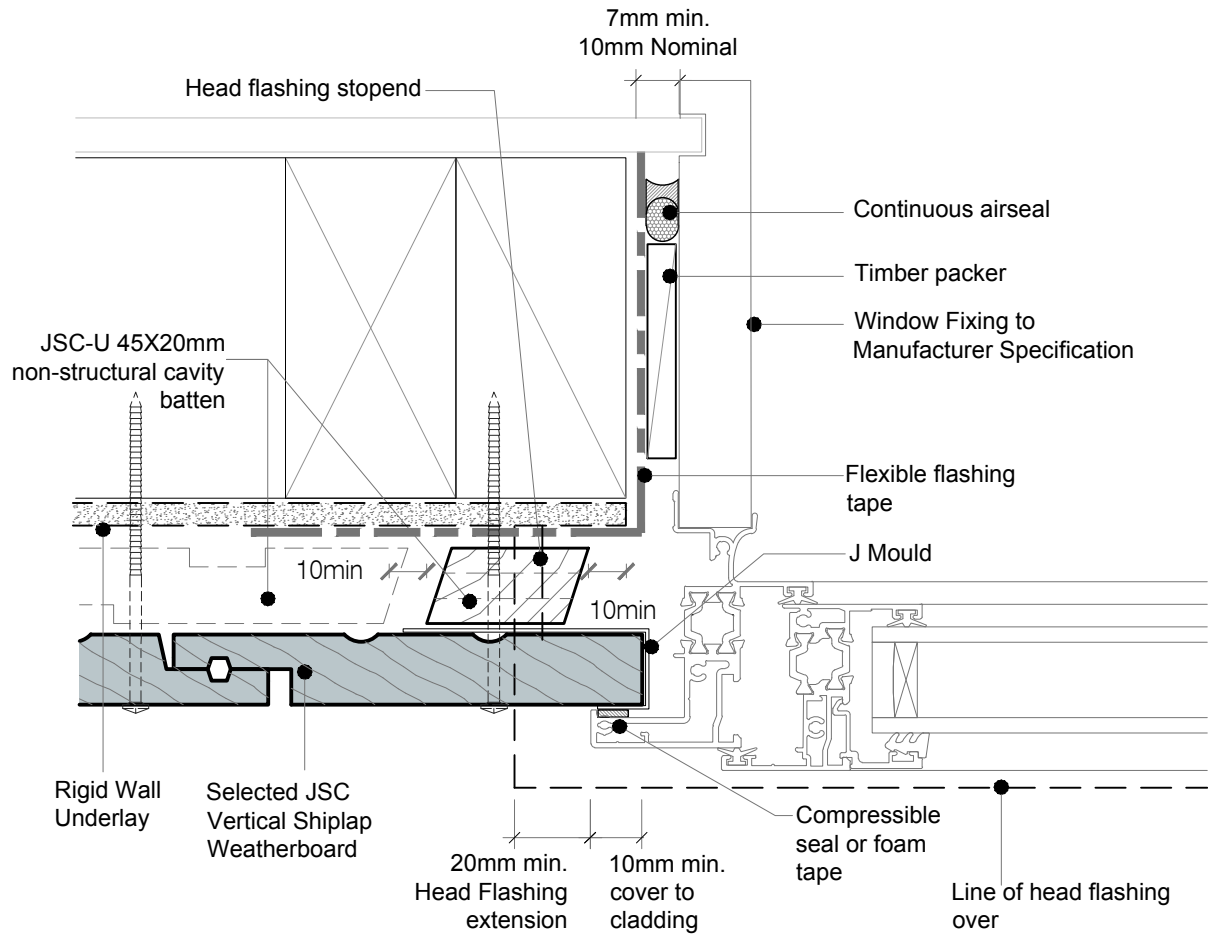


• TO BE READ IN CONJUNCTION WITH COMPLETE JSC VERTICLAD SYSTEM LITERATURE

CodeMark
CMNZ30084



SCAN IT FOR MORE
INFORMATION



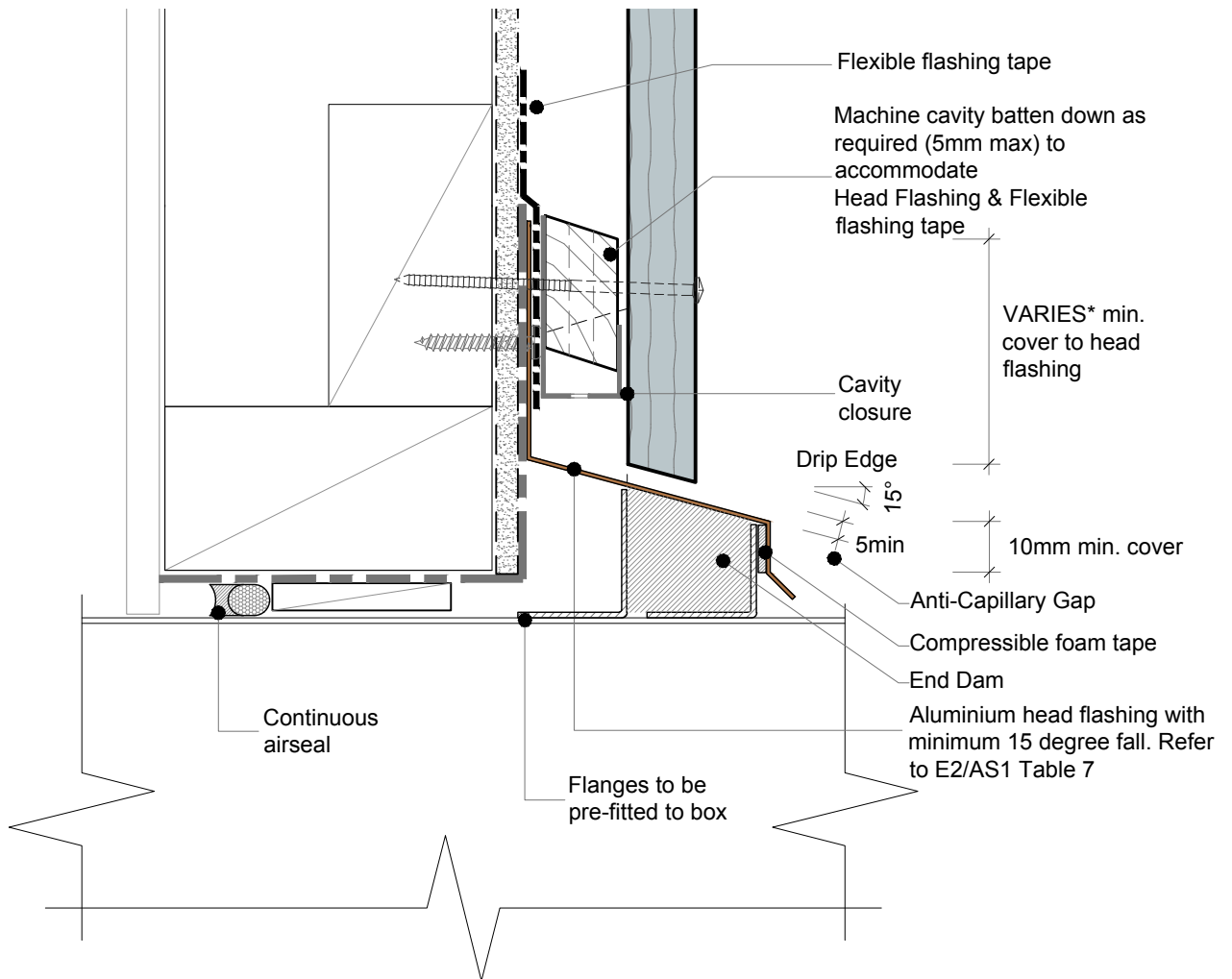
NOTE : No Scriber Option :

The Aluminium Joinery must sit hard against the back of the joinery flange and the timber weatherboards with a seal or foam tape in between.

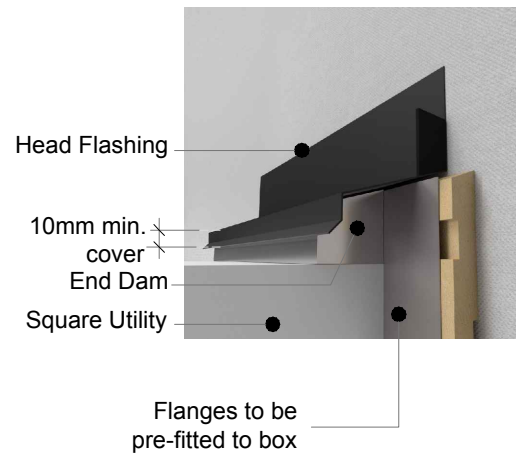
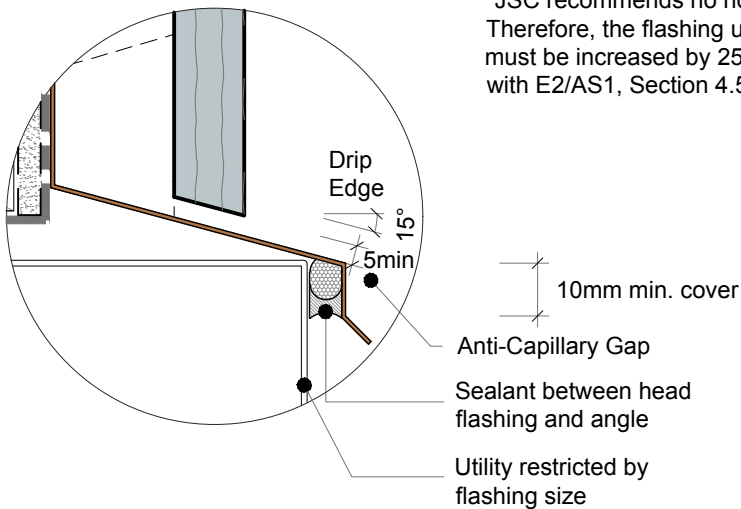
• TO BE READ IN CONJUNCTION WITH COMPLETE JSC VERTICLAD SYSTEM LITERATURE

CodeMark
CMNZ30084





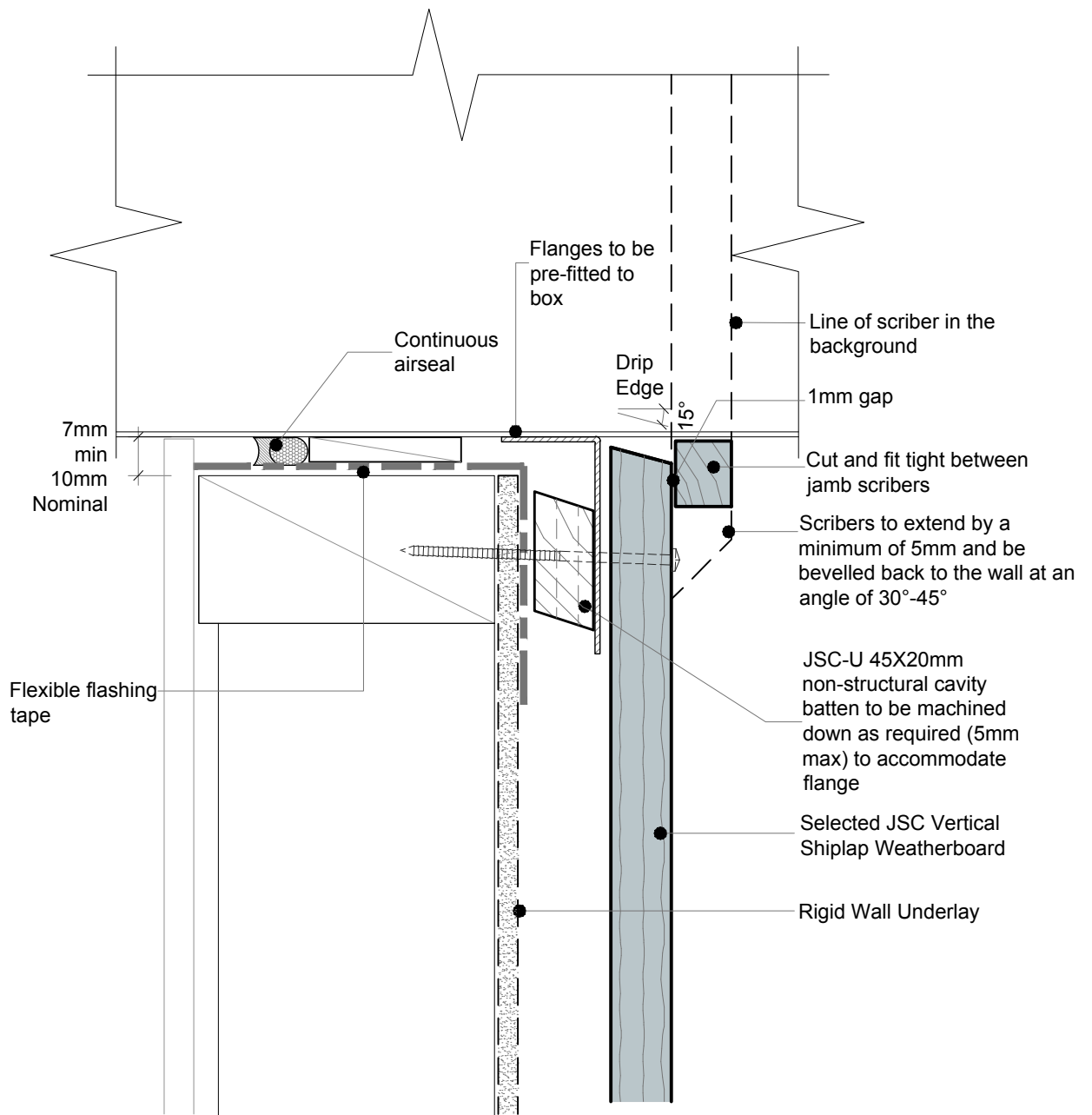
*JSC recommends no hooks or hems. Therefore, the flashing upstand dimensions must be increased by 25 mm in accordance with E2/AS1, Section 4.5.1



• TO BE READ IN CONJUNCTION WITH COMPLETE JSC VERTICLAD SYSTEM LITERATURE

CodeMark
CMNZ30084

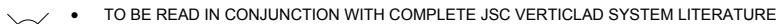


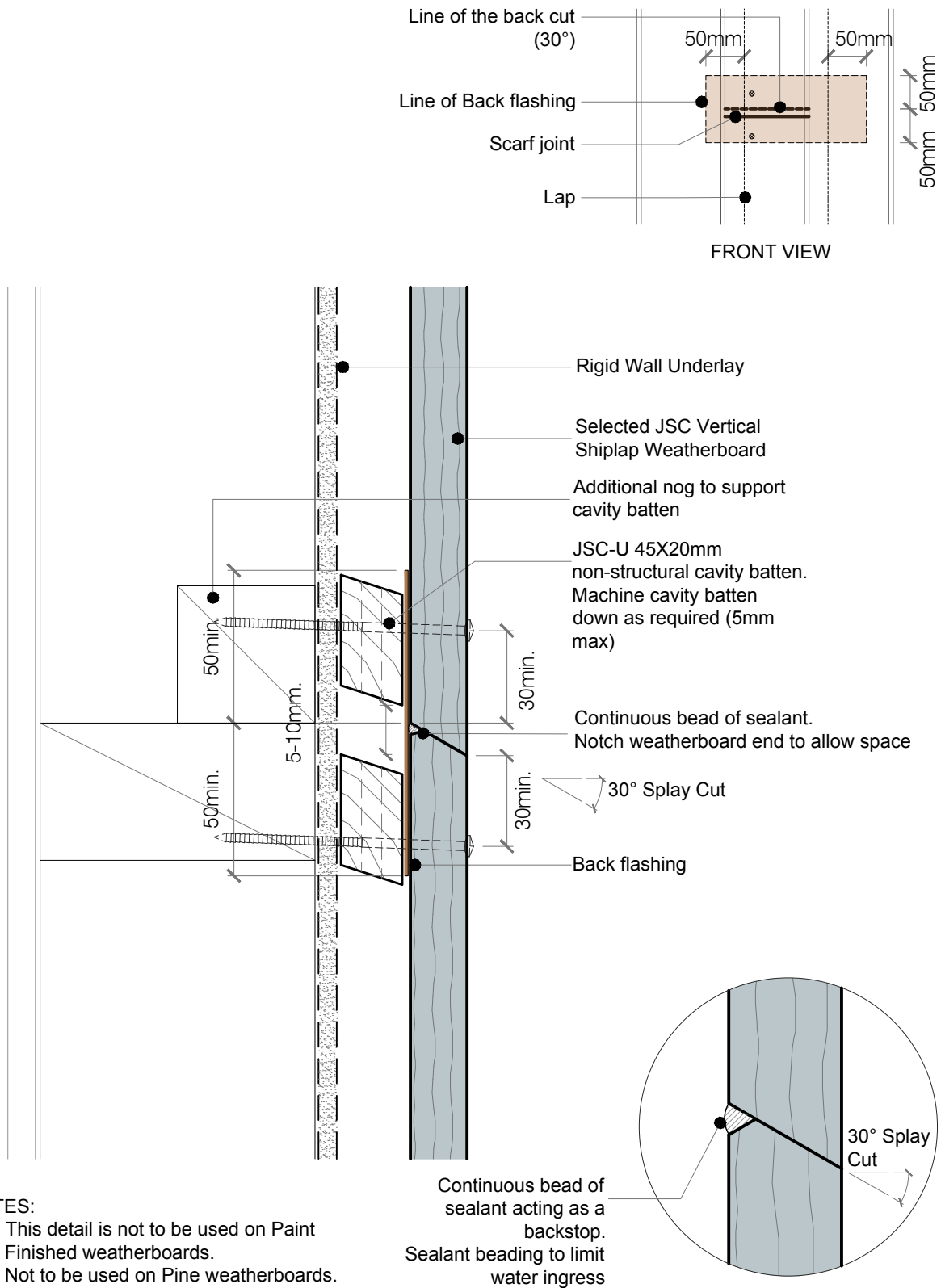


• TO BE READ IN CONJUNCTION WITH COMPLETE JSC VERTICLAD SYSTEM LITERATURE

CodeMark
CMNZ30084







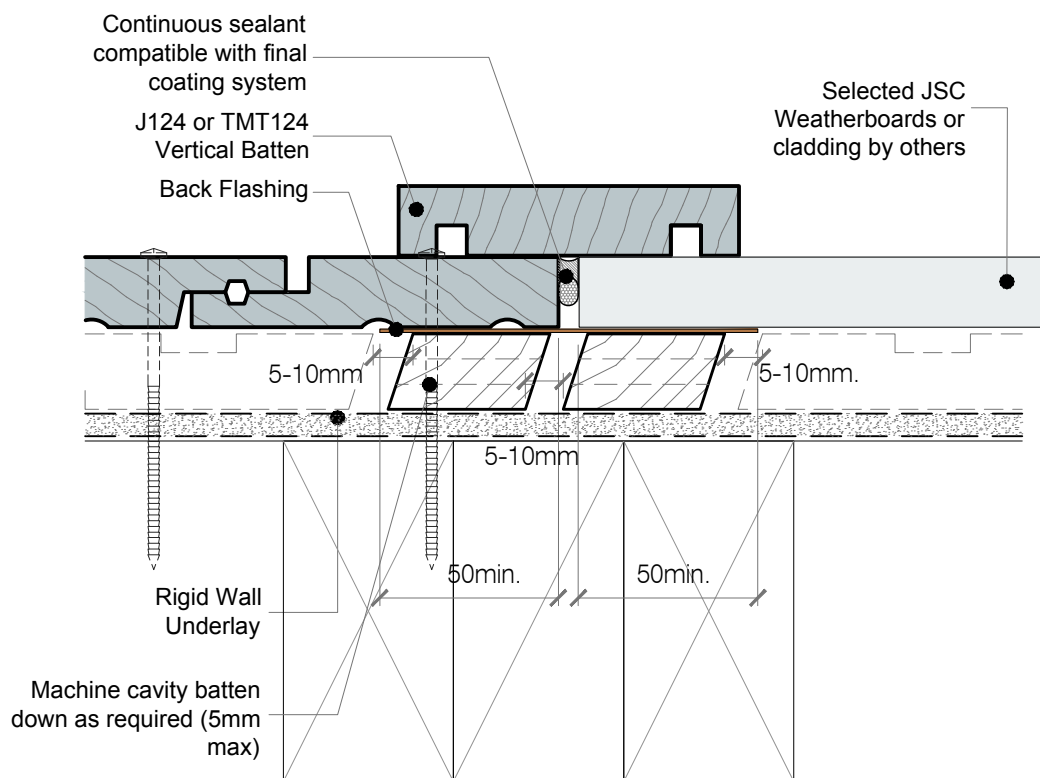
NOTES:

- This detail is not to be used on Paint Finished weatherboards.
- Not to be used on Pine weatherboards.

• TO BE READ IN CONJUNCTION WITH COMPLETE JSC VERTICLAD SYSTEM LITERATURE

CodeMark
CMNZ30084

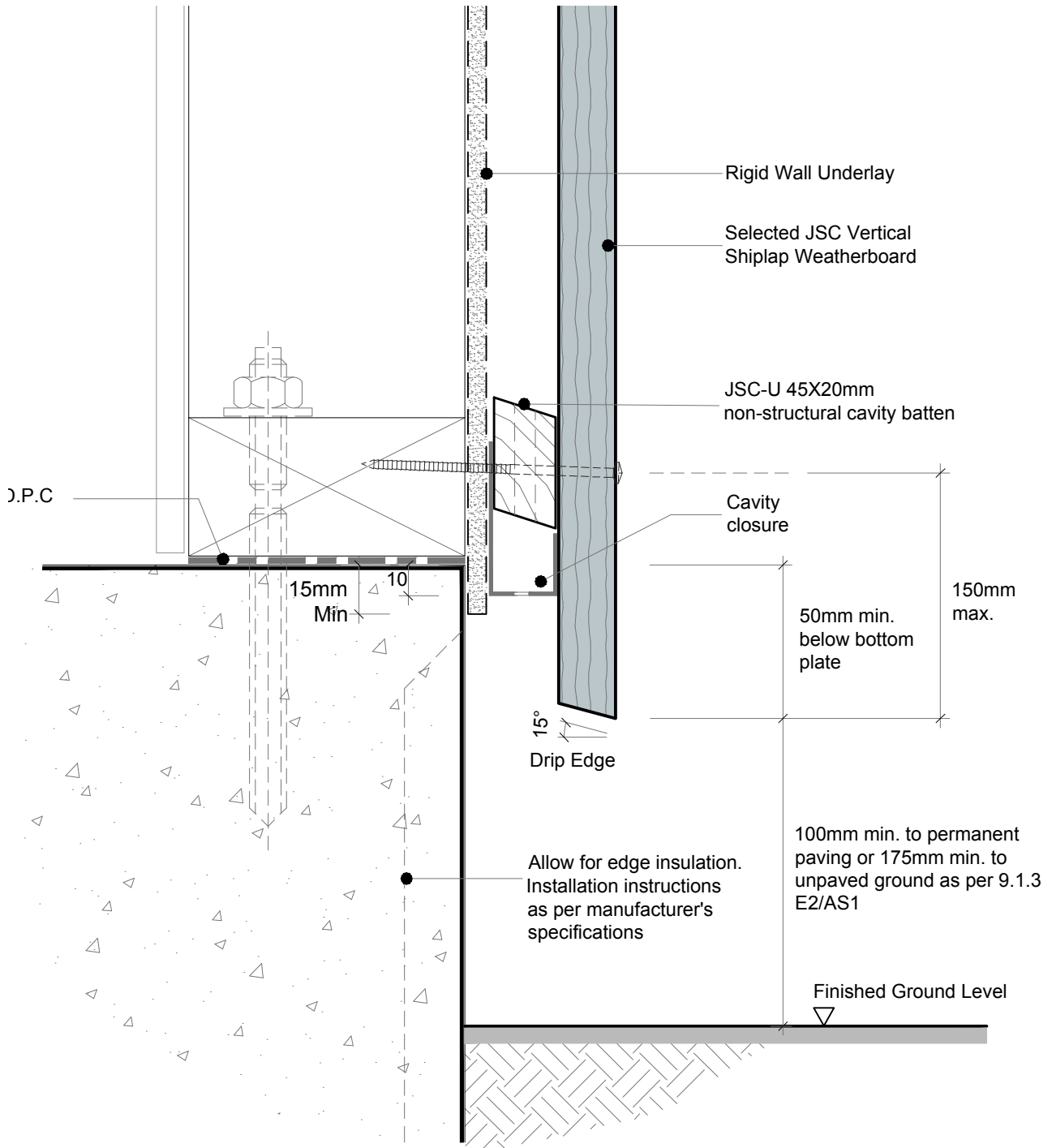




• TO BE READ IN CONJUNCTION WITH COMPLETE JSC VERTICLAD SYSTEM LITERATURE

CodeMark
CMNZ30084





• TO BE READ IN CONJUNCTION WITH COMPLETE JSC VERTICLAD SYSTEM LITERATURE

CodeMark
CMNZ30084

JSC PREMIUM ARCHITECTURAL
& BUILDING SOLUTIONS

jsc.co.nz
TechHelp@jsc.co.nz | (09) 412 2812

TYPE
VERTICAL SHIPLAP WB - 20MM CAVITY FIX

NAME
Base of Wall, Concrete

• DETAILS MAY BE SUBJECT TO CHANGE WITHOUT NOTICE



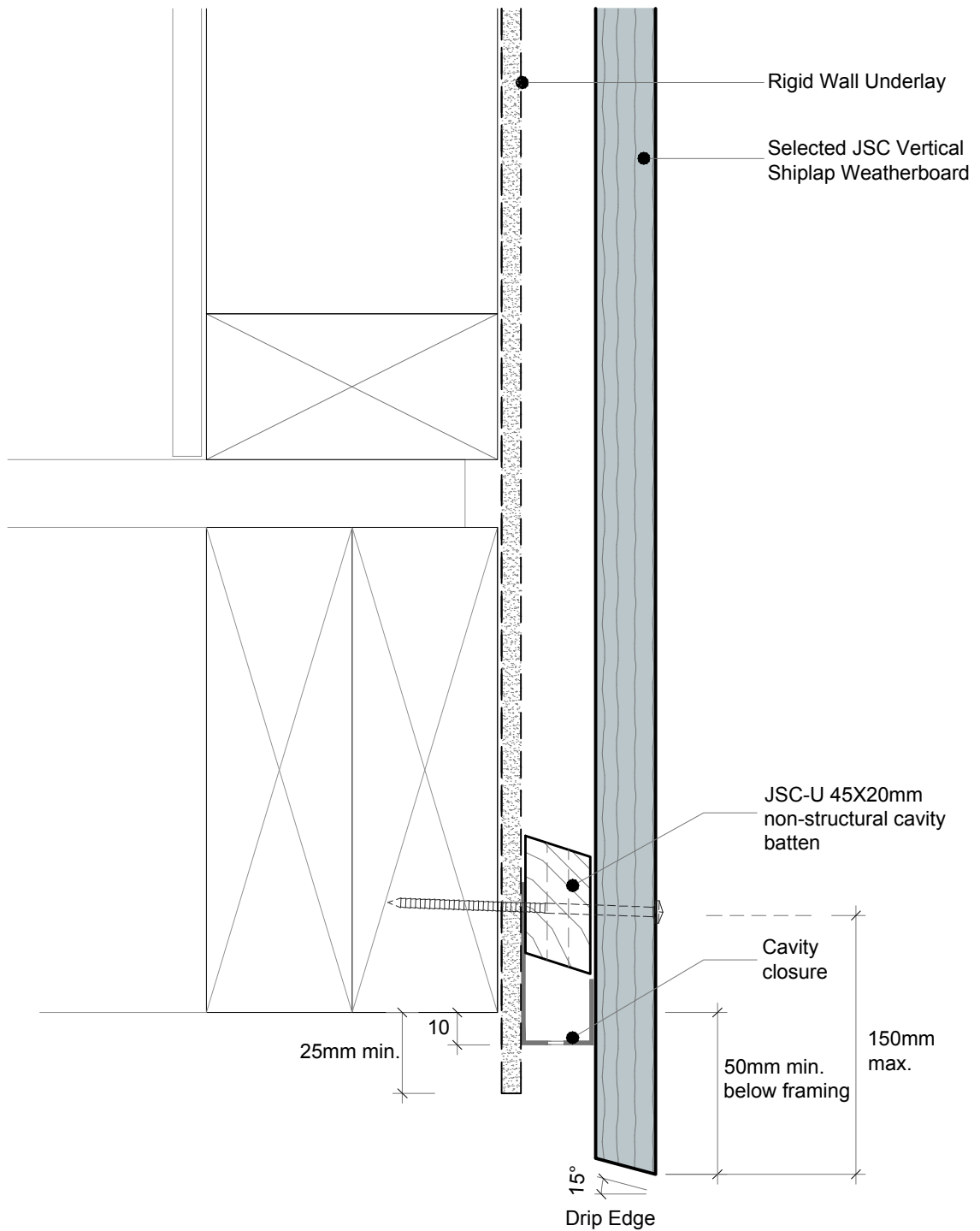
SCAN IT FOR MORE
INFORMATION

DRAWING SCALE
1:2 @ A4

ISSUE DATE
24/02/2025

DRAWING NUMBER
JSC 20CR VS42

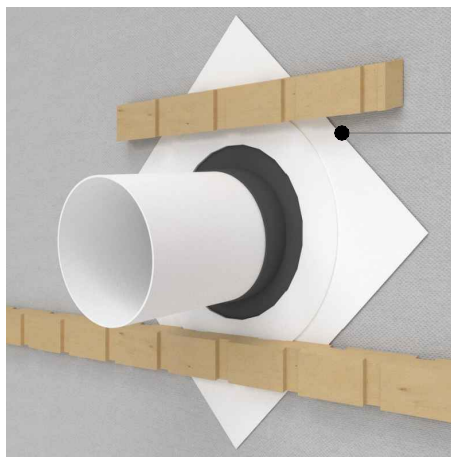
VERSION
2.5



• TO BE READ IN CONJUNCTION WITH COMPLETE JSC VERTICLAD SYSTEM LITERATURE

CodeMark
CMNZ30084





Proprietary self adhesive collar at 45°



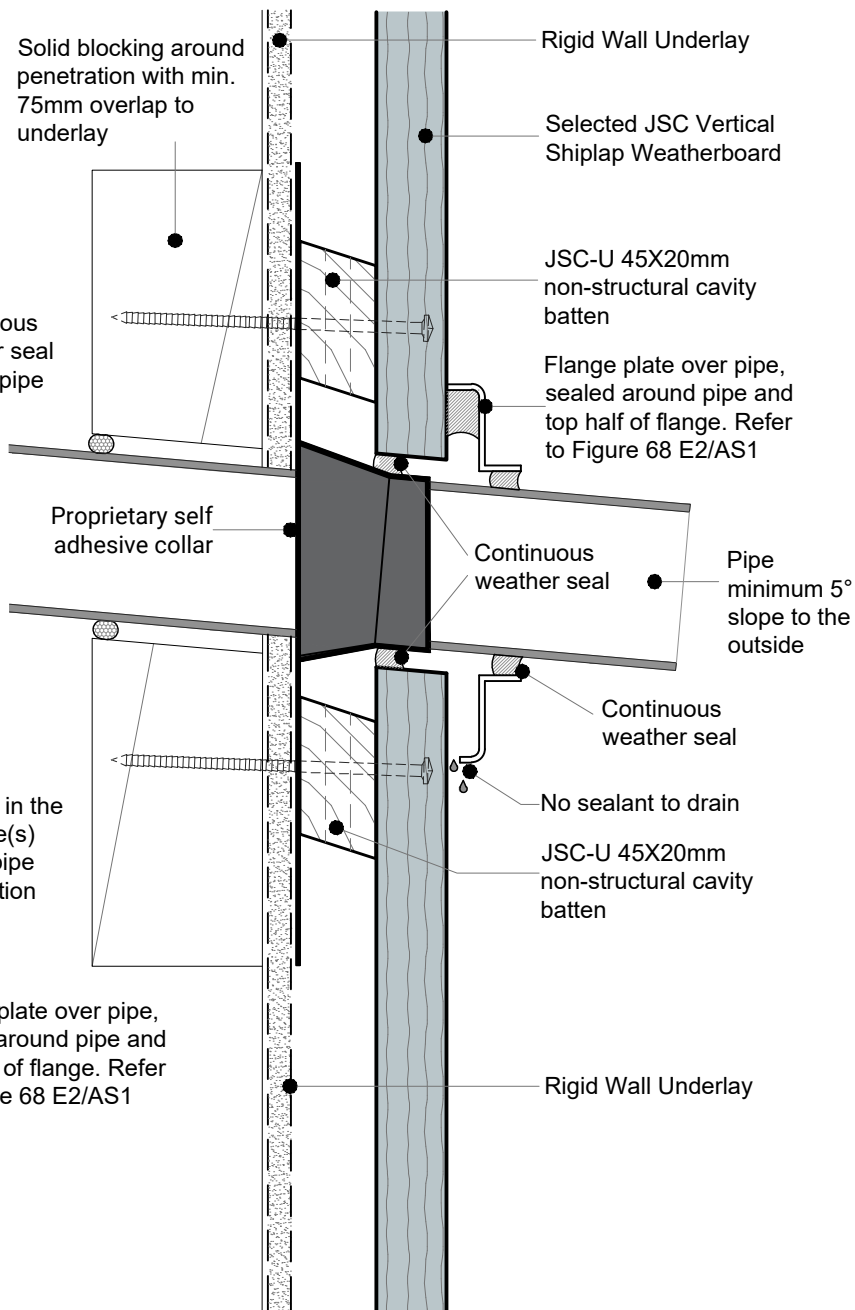
Continuous weather seal around pipe



Sealant in the negative(s) above pipe penetration

Flange plate over pipe, sealed around pipe and top half of flange. Refer to Figure 68 E2/AS1

No sealant to drain



• TO BE READ IN CONJUNCTION WITH COMPLETE JSC VERTICLAD SYSTEM LITERATURE

CodeMark
CMNZ30084

JSC PREMIUM ARCHITECTURAL
& BUILDING SOLUTIONS

jsc.co.nz
TechHelp@jsc.co.nz | (09) 412 2812

TYPE
VERTICAL SHIPLAP WB - 20MM CAVITY FIX
NAME
Pipe Penetration

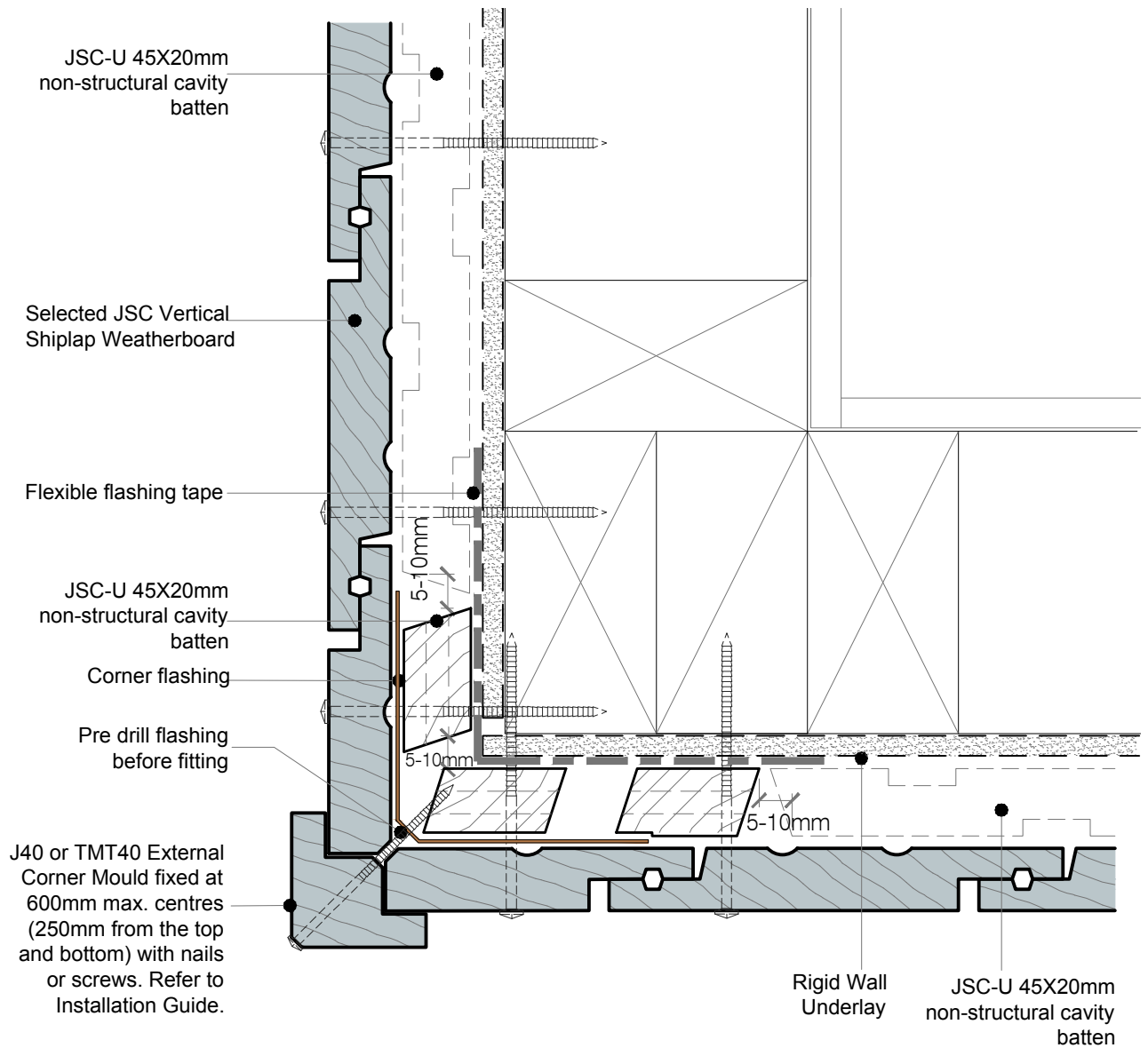
• DETAILS MAY BE SUBJECT TO CHANGE WITHOUT NOTICE



SCAN IT FOR MORE
INFORMATION

DRAWING SCALE
1:2 @ A4
ISSUE DATE
24/02/2025

DRAWING NUMBER
JSC 20CR VS44
VERSION
2.5



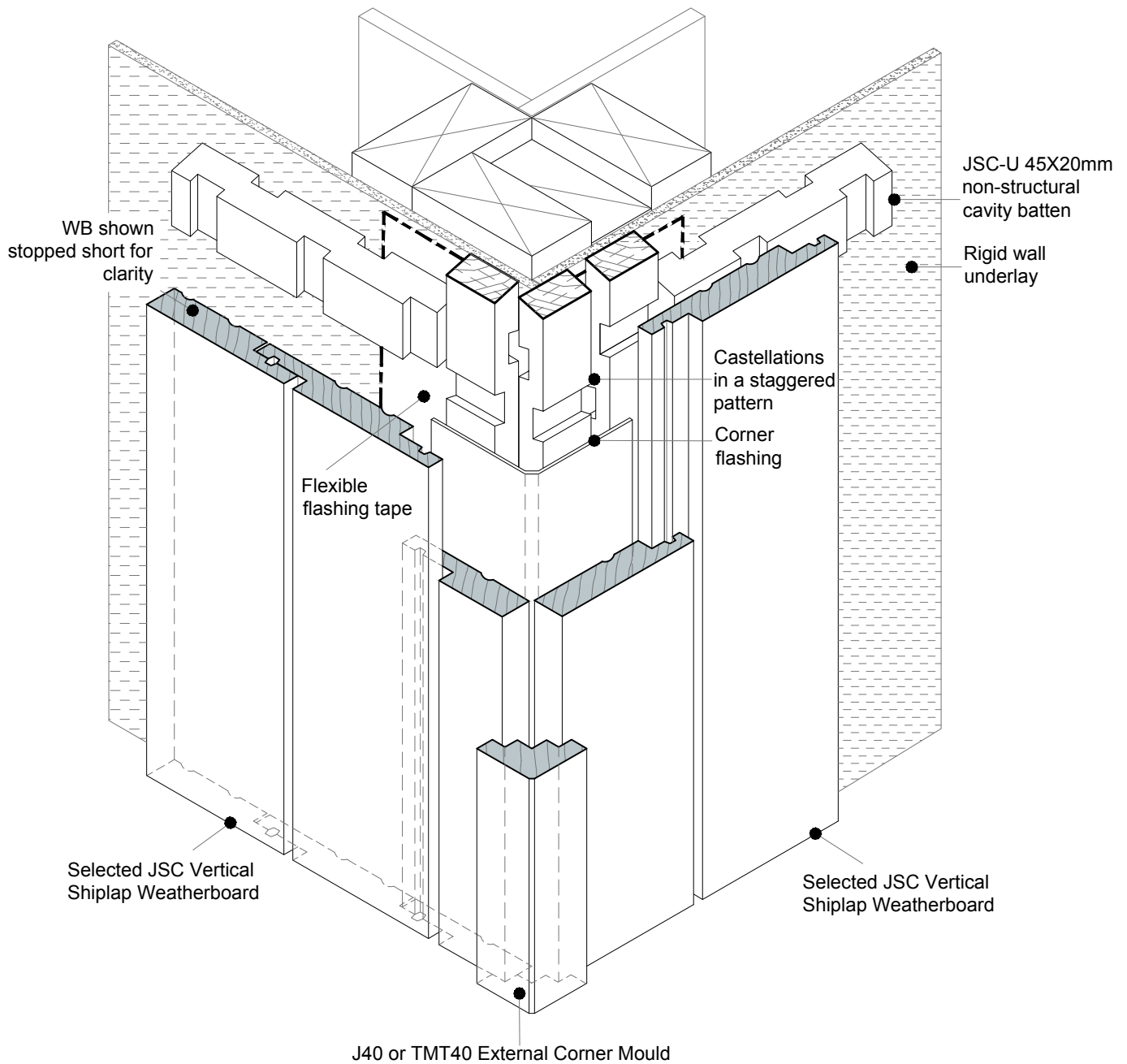
NOTES:

- Machine cavity battens down as required (5mm max) to accommodate corner flashing.
- Cut horizontal and vertical cavity battens on a 20-30° angle, sloping away from the framing.
- For Very High (VH) and Extra High (EH) wind zones, a solid batten (non-castellated) is required down one side of a significant external corner (change in elevation) to provide pressure isolation between elevations.

• TO BE READ IN CONJUNCTION WITH COMPLETE JSC VERTICLAD SYSTEM LITERATURE

CodeMark
CMNZ30084

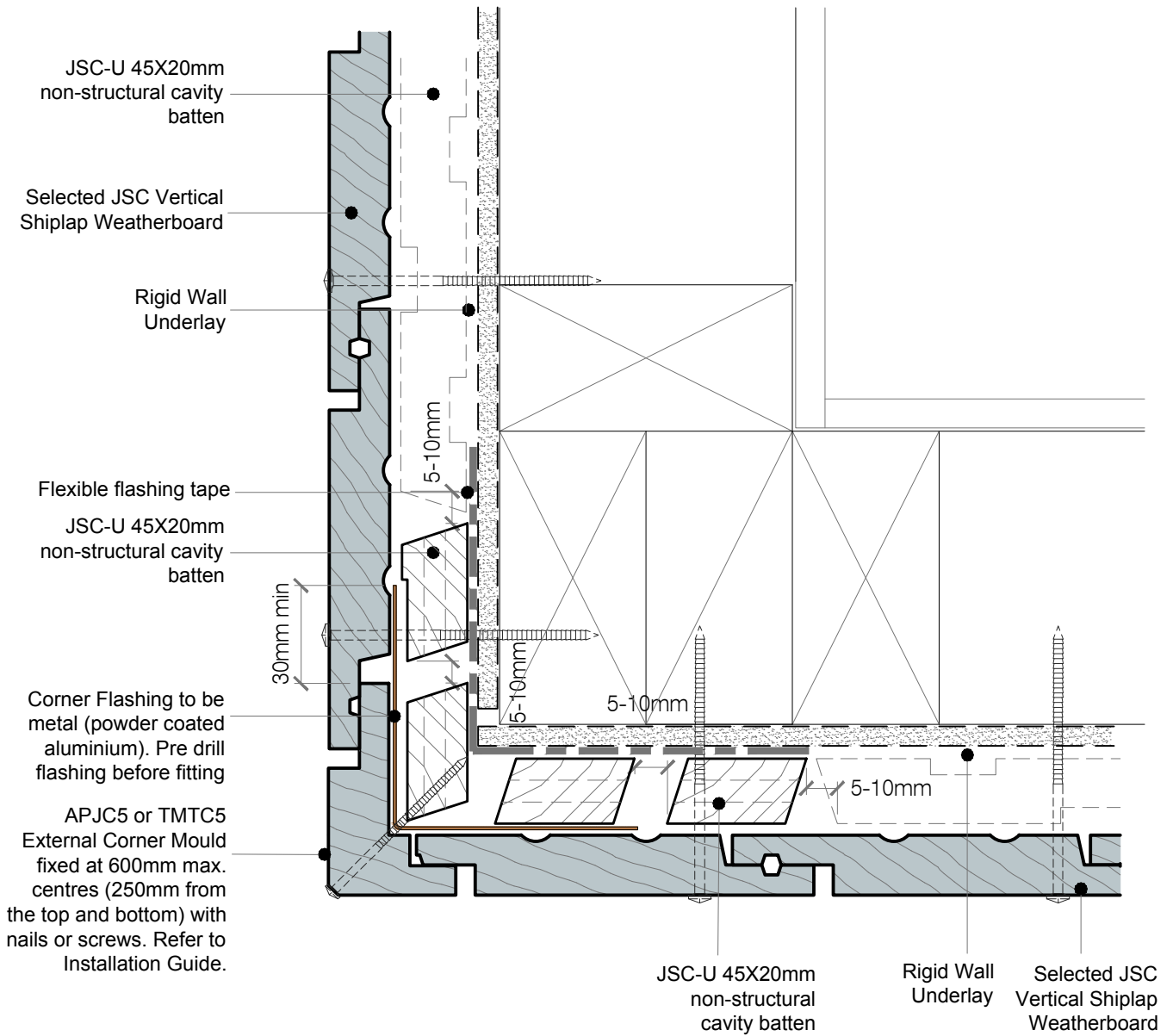




• TO BE READ IN CONJUNCTION WITH COMPLETE JSC VERTICLAD SYSTEM LITERATURE

CodeMark 
CMNZ30084





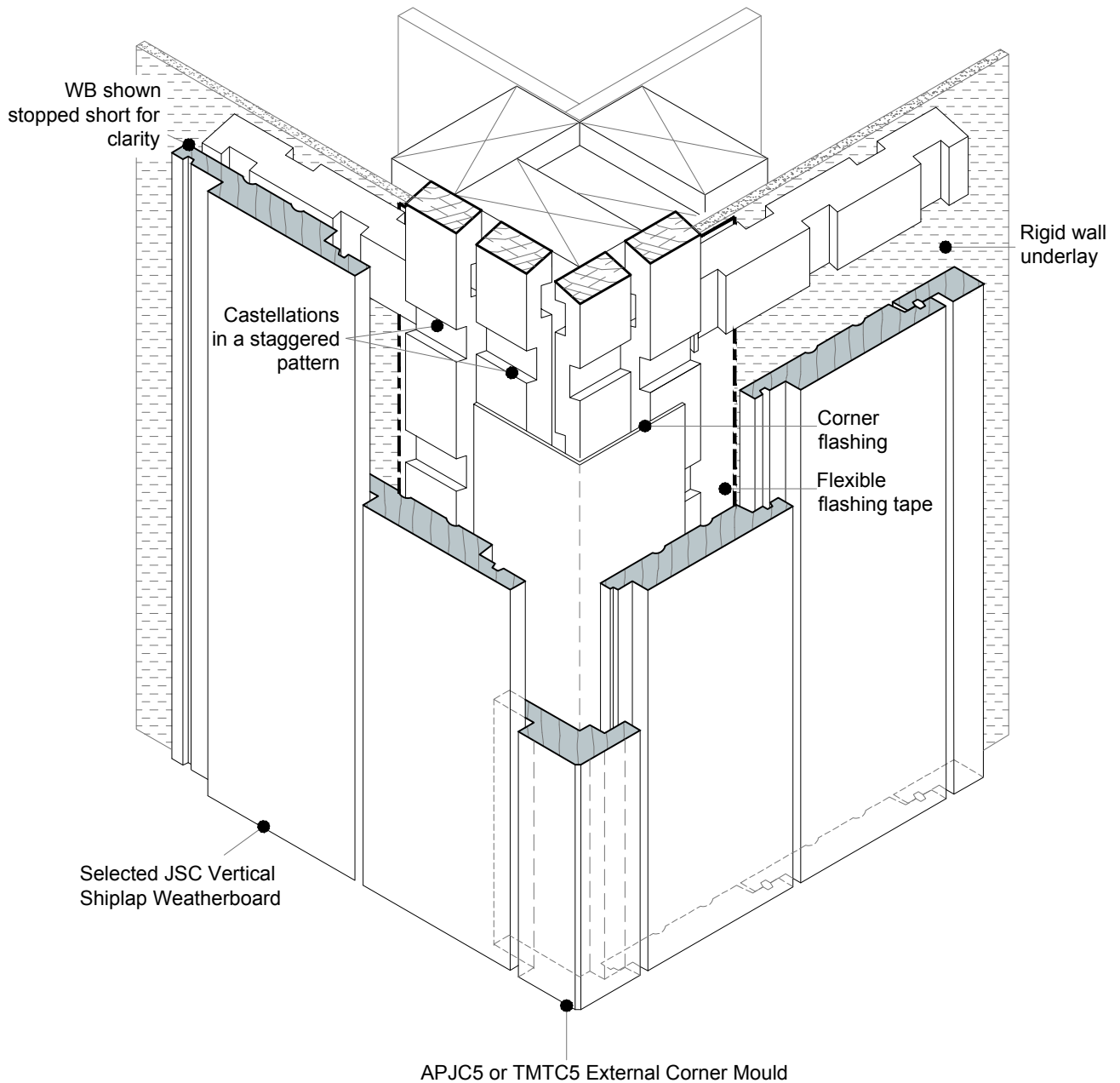
NOTES:

- Machine cavity battens down as required (5mm max) to accommodate corner flashing.
- Cut horizontal and vertical cavity battens on a 20-30° angle, sloping away from the framing.
- For Very High (VH) and Extra High (EH) wind zones, a solid batten (non-castellated) is required down one side of a significant external corner (change in elevation) to provide pressure isolation between elevations.

• TO BE READ IN CONJUNCTION WITH COMPLETE JSC VERTICLAD SYSTEM LITERATURE

CodeMark
CMNZ30084





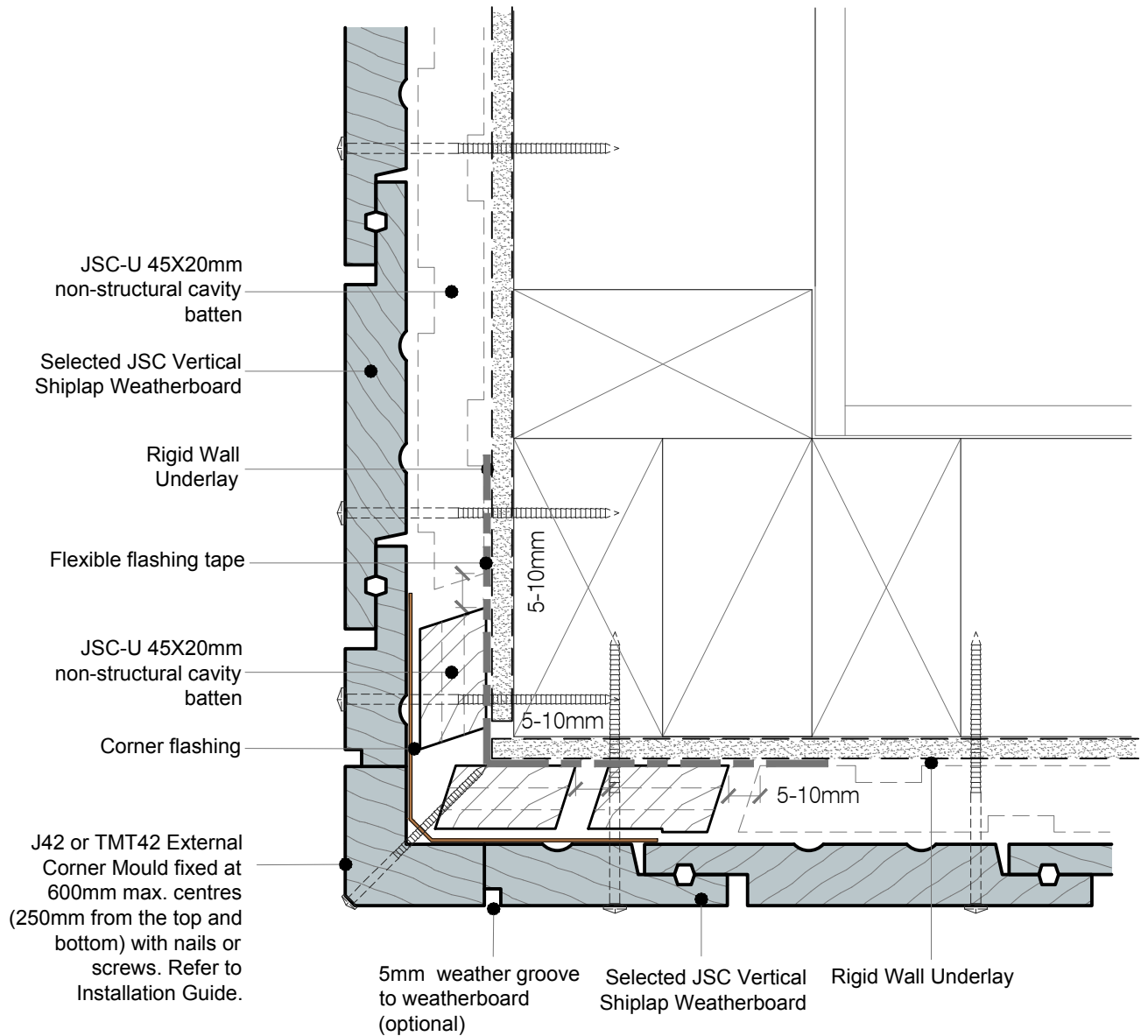
DETAIL NOTE :

For Very High (VH) and Extra High (EH) wind zones (as defined NZS 3604), a solid batten (non castellated) is required down one side of a significant external corner (change in elevation) to provide pressure isolation between elevations.

- TO BE READ IN CONJUNCTION WITH COMPLETE JSC VERTICLAD SYSTEM LITERATURE

CodeMark
CMNZ30084





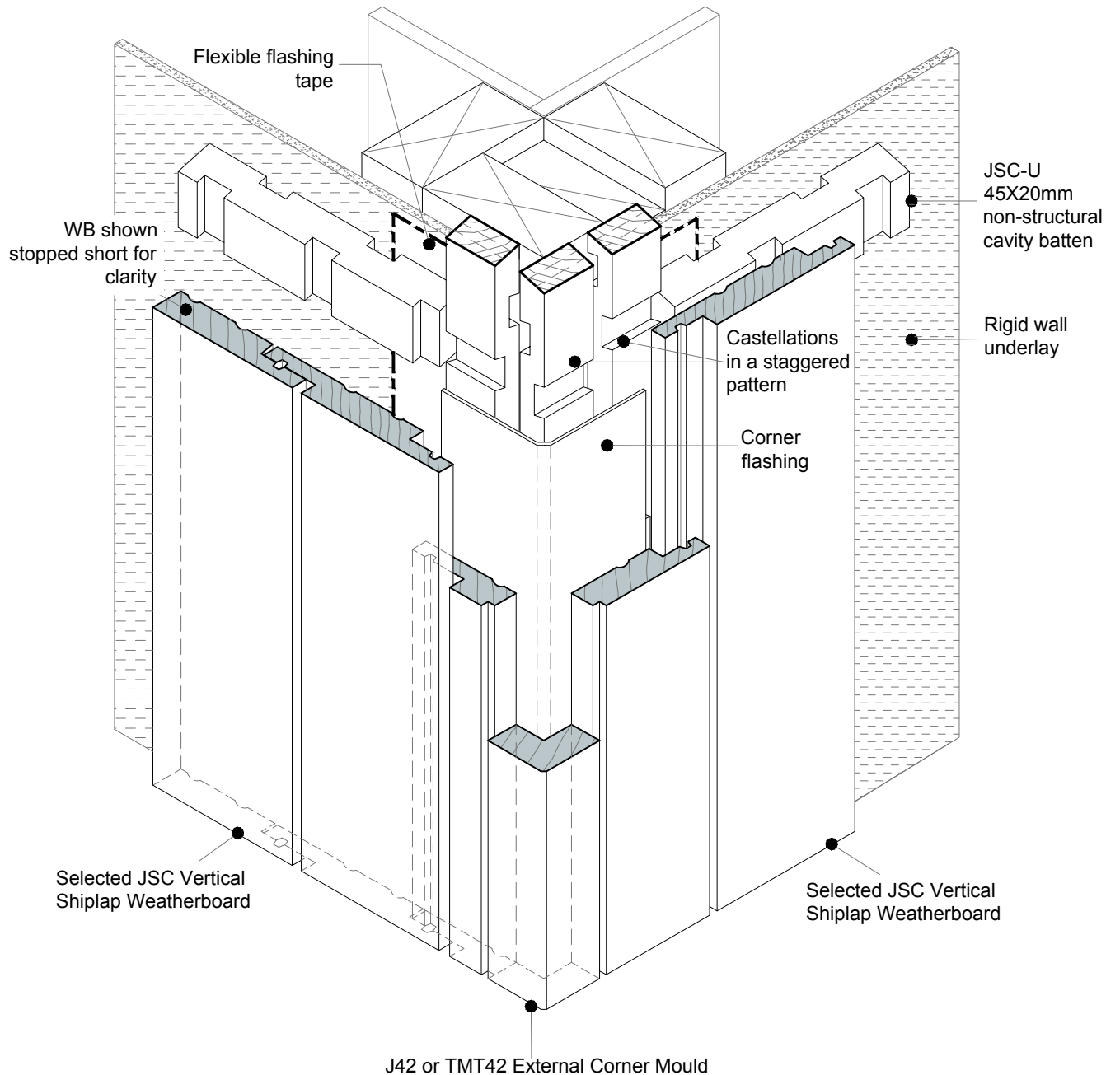
NOTES:

- Machine cavity battens down as required (5mm max) to accommodate corner flashing.
- Cut horizontal and vertical cavity battens on a 20-30° angle, sloping away from the framing.
- For Very High (VH) and Extra High (EH) wind zones, a solid batten (non-castellated) is required down one side of a significant external corner (change in elevation) to provide pressure isolation between elevations.
- JSC recommends this detail to be used for paint finished weatherboards.

• TO BE READ IN CONJUNCTION WITH COMPLETE JSC VERTICLAD SYSTEM LITERATURE

CodeMark
CMNZ30084





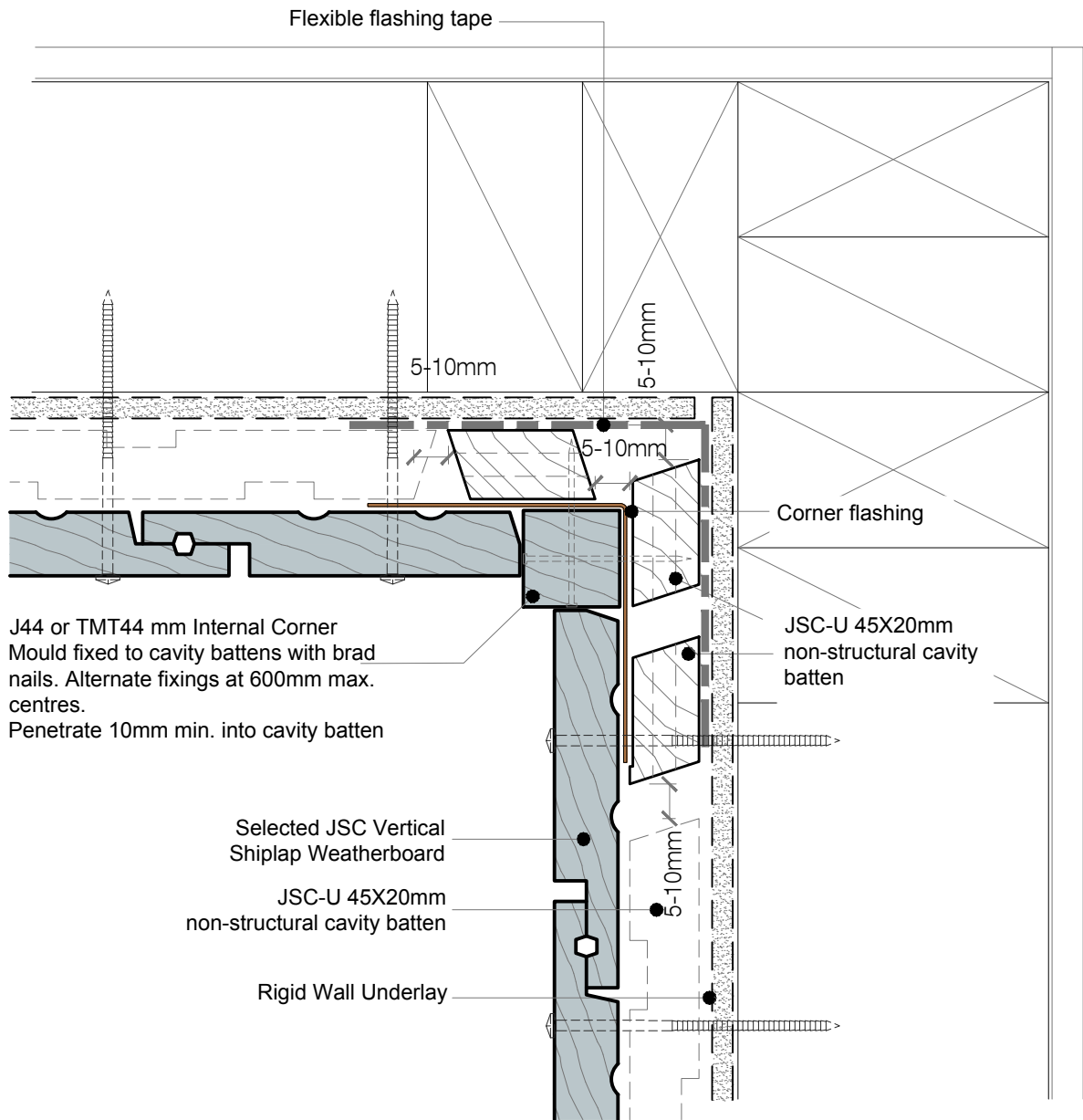
DETAIL NOTE :

- For Very High (VH) and Extra High (EH) wind zones (as defined NZS 3604), a solid batten (non castellated) is required down one side of a significant external corner (change in elevation) to provide pressure isolation between elevations.
- JSC recommends this detail to be used for paint finished weatherboards.

• TO BE READ IN CONJUNCTION WITH COMPLETE JSC VERTICLAD SYSTEM LITERATURE

CodeMark
CMNZ30084





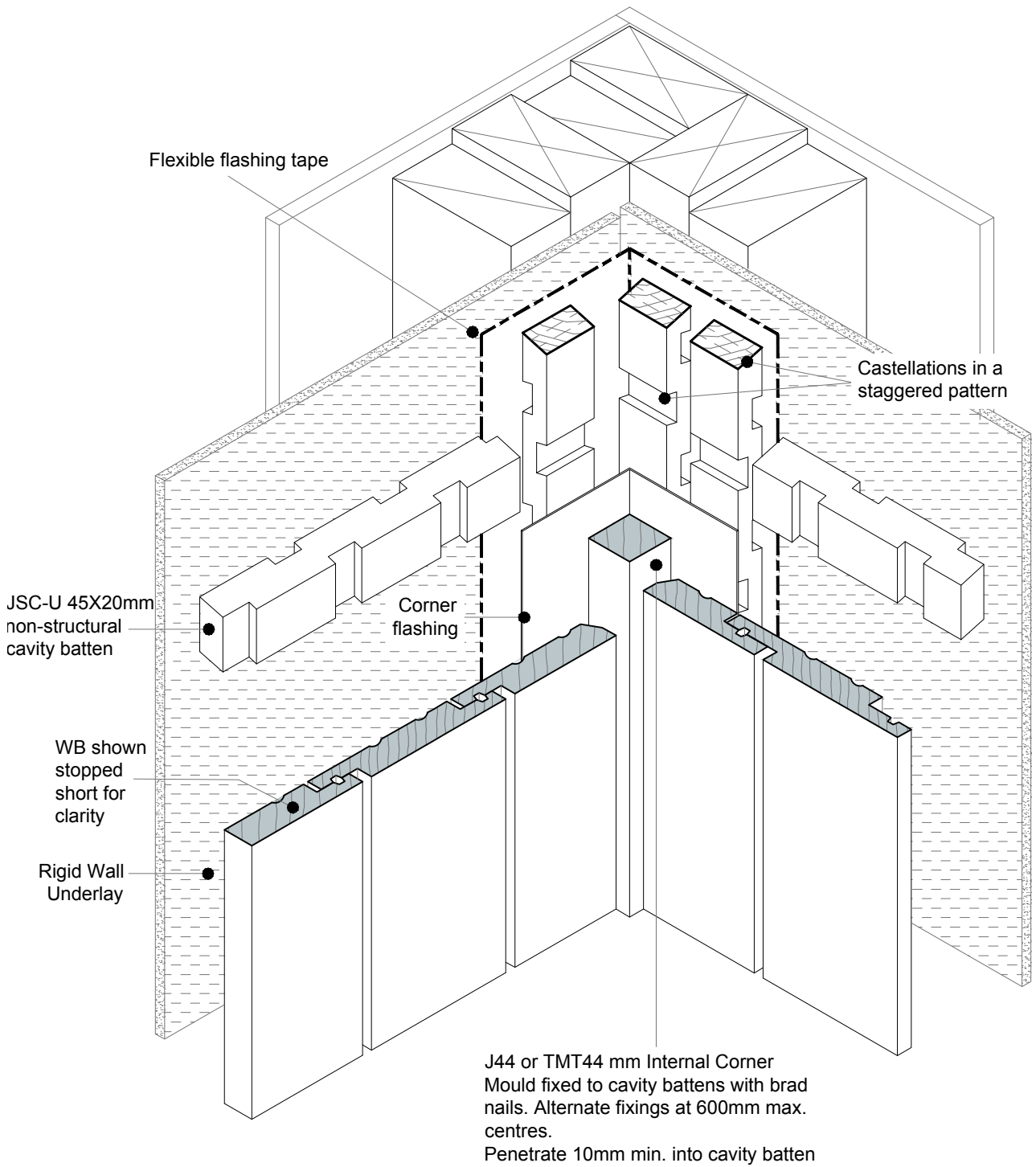
NOTES:

- Machine cavity battens down as required (5mm max) to accommodate corner flashing.
- Cut horizontal and vertical cavity battens on a 20-30° angle, sloping away from the framing.

• TO BE READ IN CONJUNCTION WITH COMPLETE JSC VERTICLAD SYSTEM LITERATURE

CodeMark
CMNZ30084

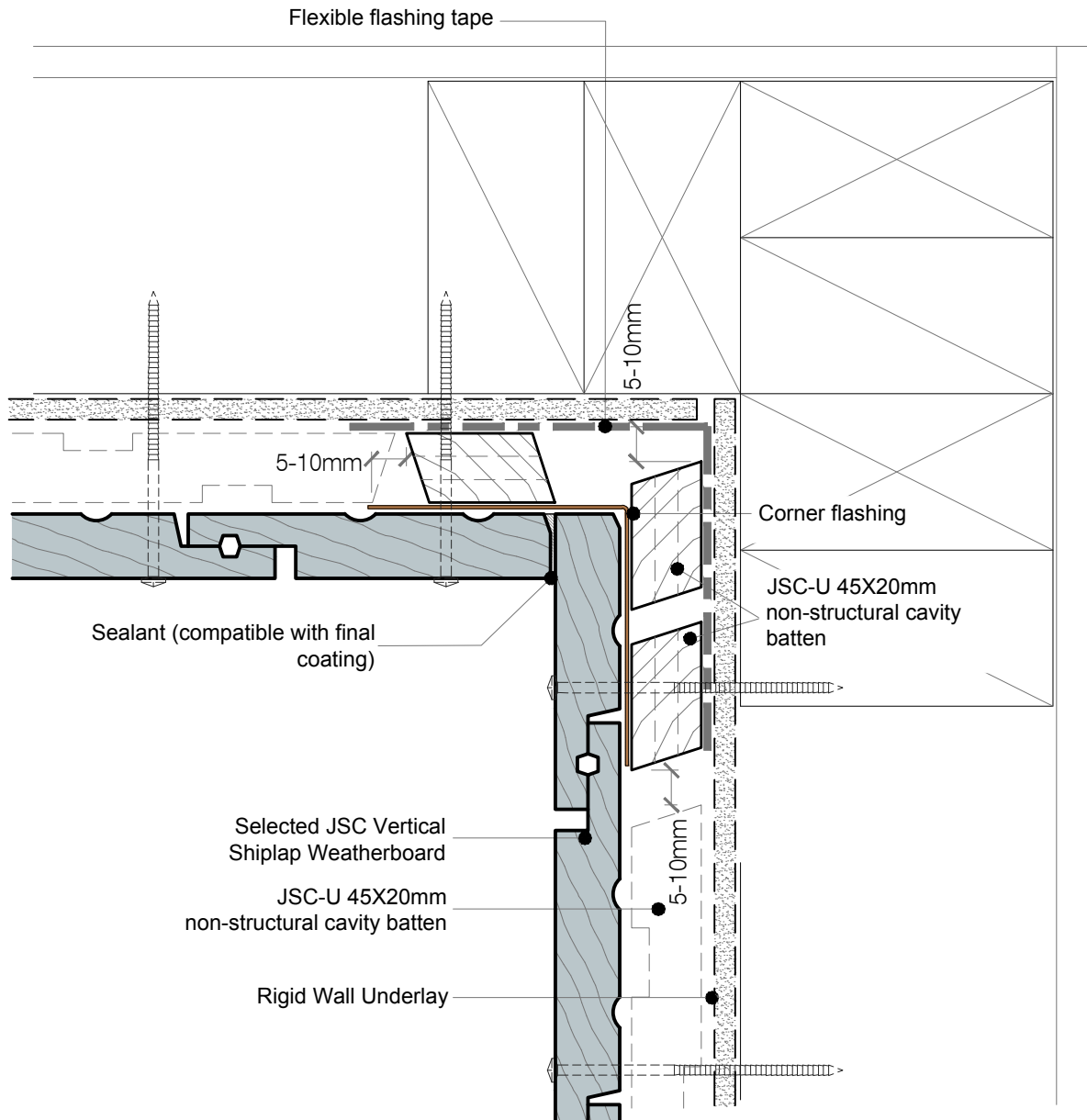




• TO BE READ IN CONJUNCTION WITH COMPLETE JSC VERTICLAD SYSTEM LITERATURE

CodeMark
CMNZ30084





- NOTES:
- Machine cavity battens down as required (5mm max) to accommodate corner flashing.
 - Cut horizontal and vertical cavity battens on a 20-30° angle, sloping away from the framing.

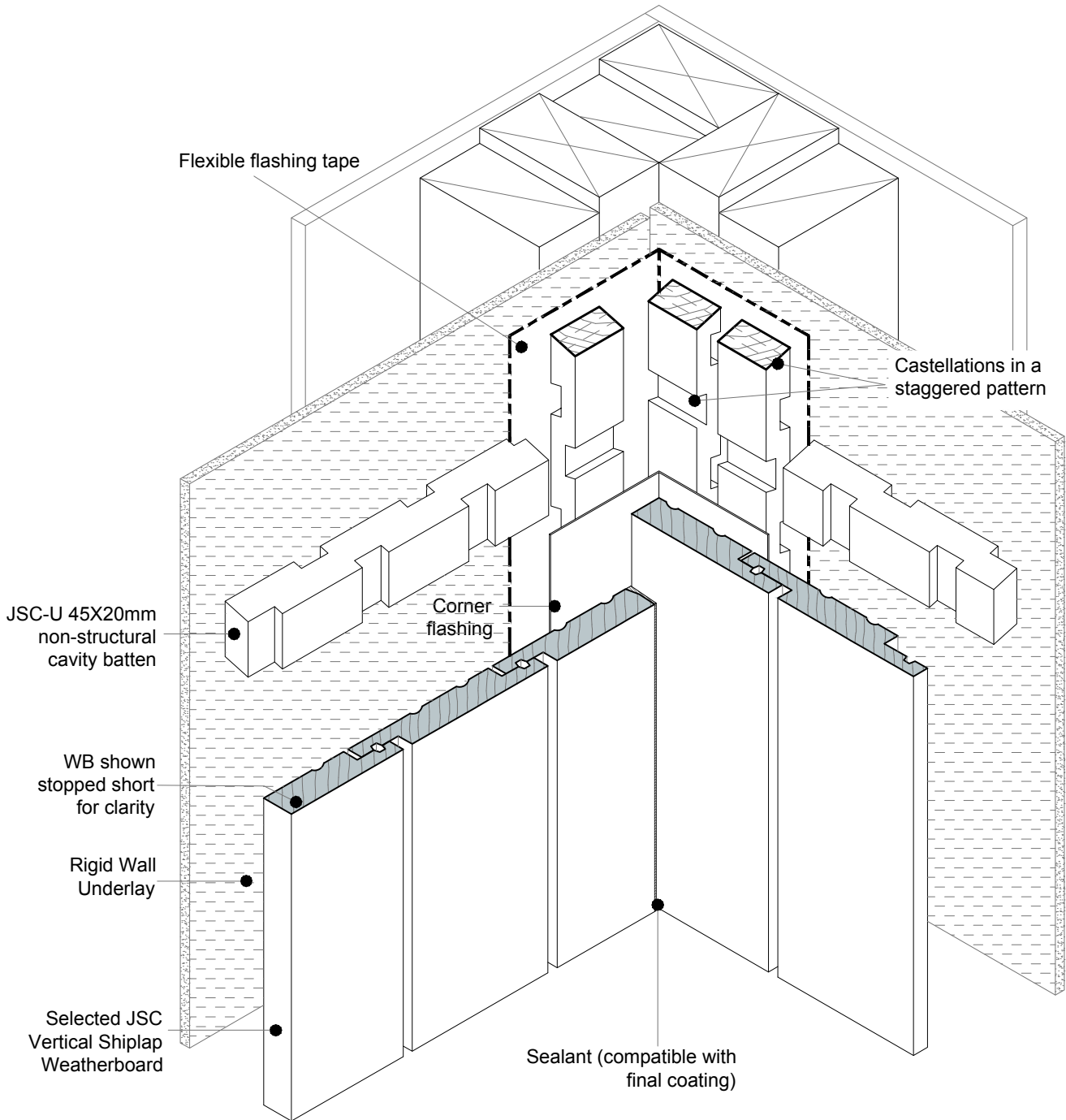
• TO BE READ IN CONJUNCTION WITH COMPLETE JSC VERTICLAD SYSTEM LITERATURE

CodeMark
CMNZ30084



SCAN IT FOR MORE
INFORMATION

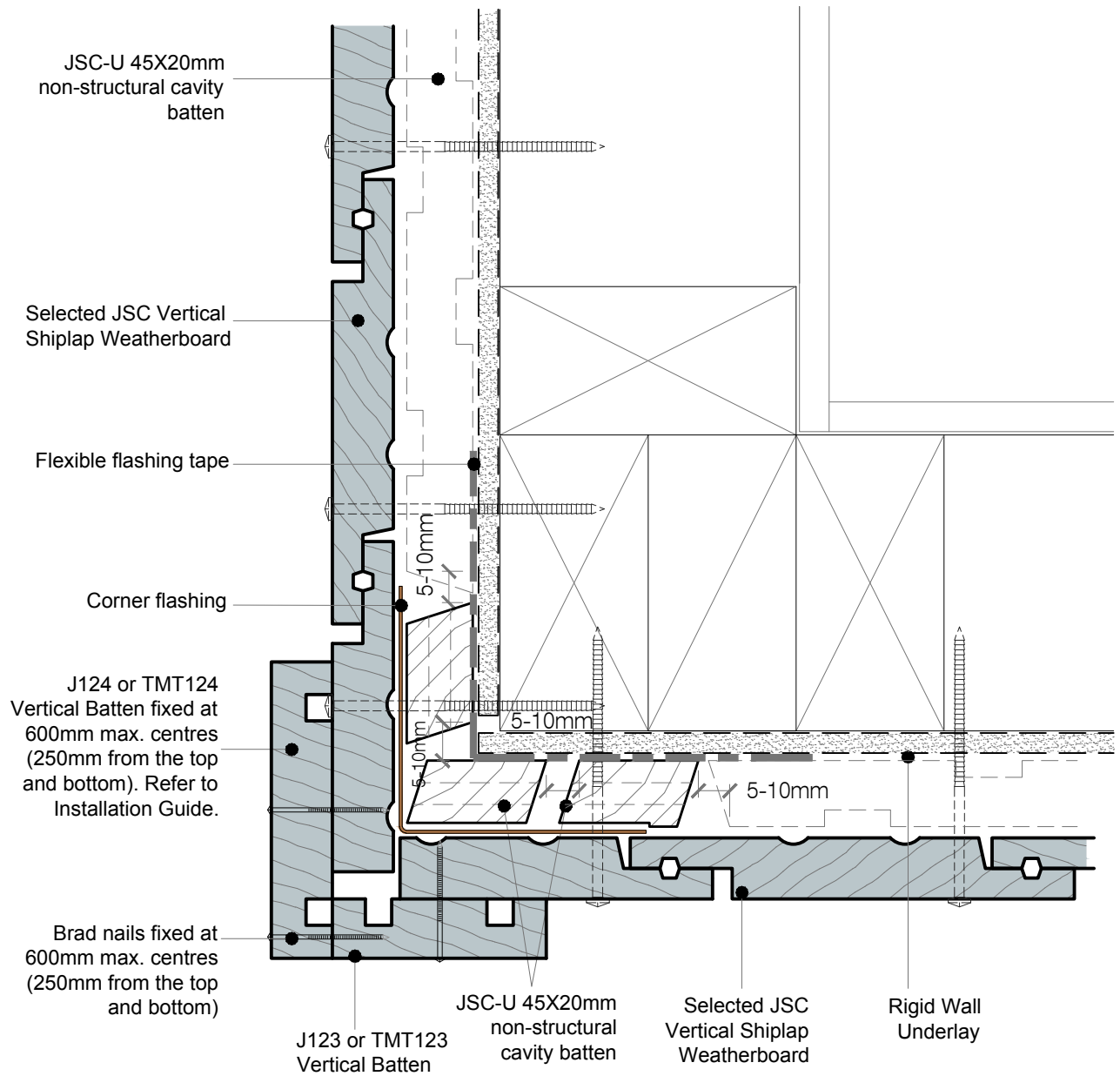
| | |
|---------------------------------|--------------------------|
| DRAWING SCALE 1:2 @ A4 | ISSUE DATE 24/02/2025 |
| DRAWING NUMBER JSC 20CR VS62 | VERSION 2.5 |



• TO BE READ IN CONJUNCTION WITH COMPLETE JSC VERTICLAD SYSTEM LITERATURE

CodeMark
CMNZ30084





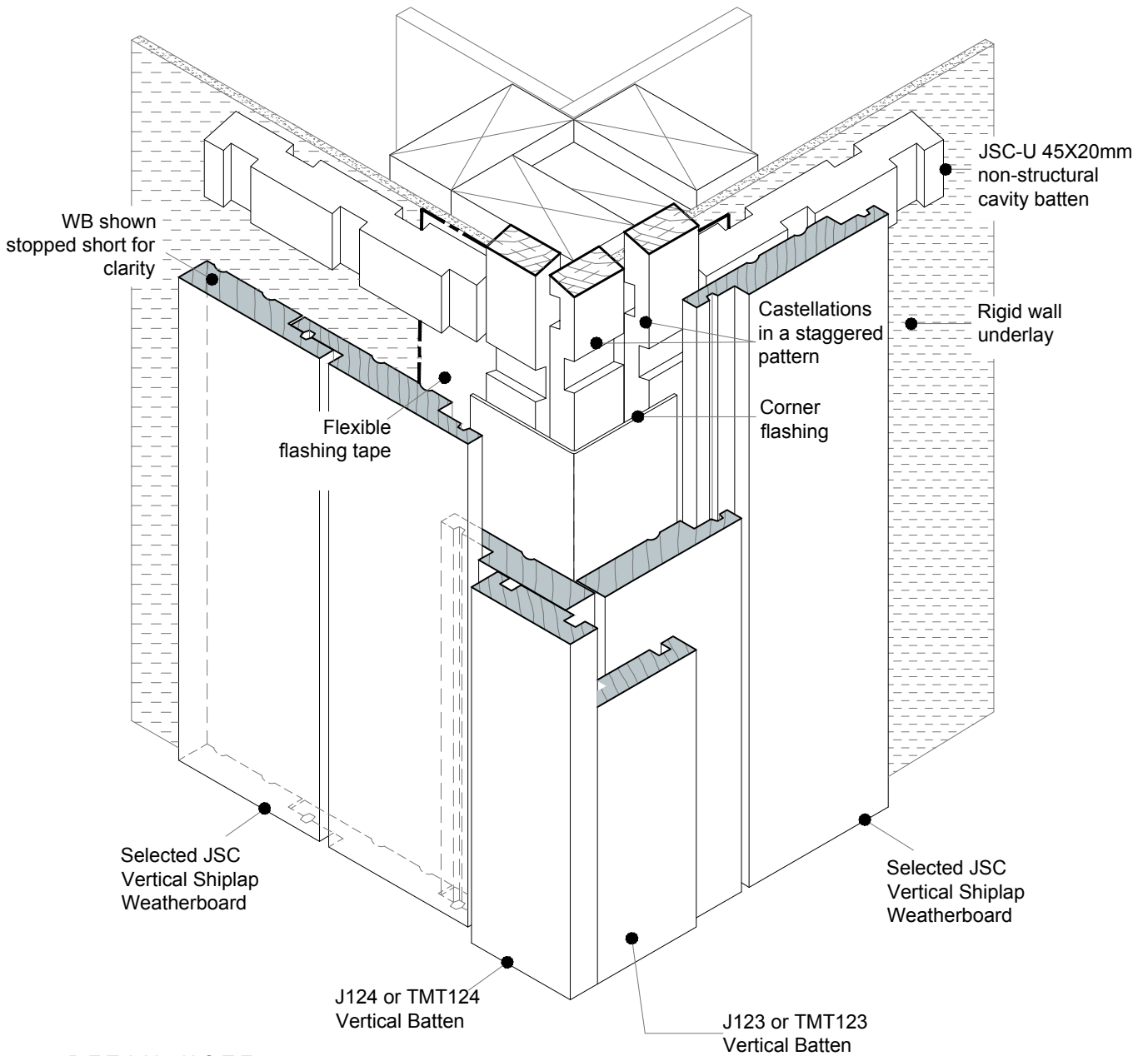
NOTES:

- Machine cavity battens down as required (5mm max) to accommodate corner flashing.
- Cut horizontal and vertical cavity battens on a 20-30° angle, sloping away from the framing.
- For Very High (VH) and Extra High (EH) wind zones, a solid batten (non-castellated) is required down one side of a significant external corner (change in elevation) to provide pressure isolation between elevations.
- JSC recommends this detail to be used for paint finished weatherboards.
- JSC recommends this detail to be used for pine weatherboards.

• TO BE READ IN CONJUNCTION WITH COMPLETE JSC VERTICLAD SYSTEM LITERATURE

CodeMark
CMNZ30084





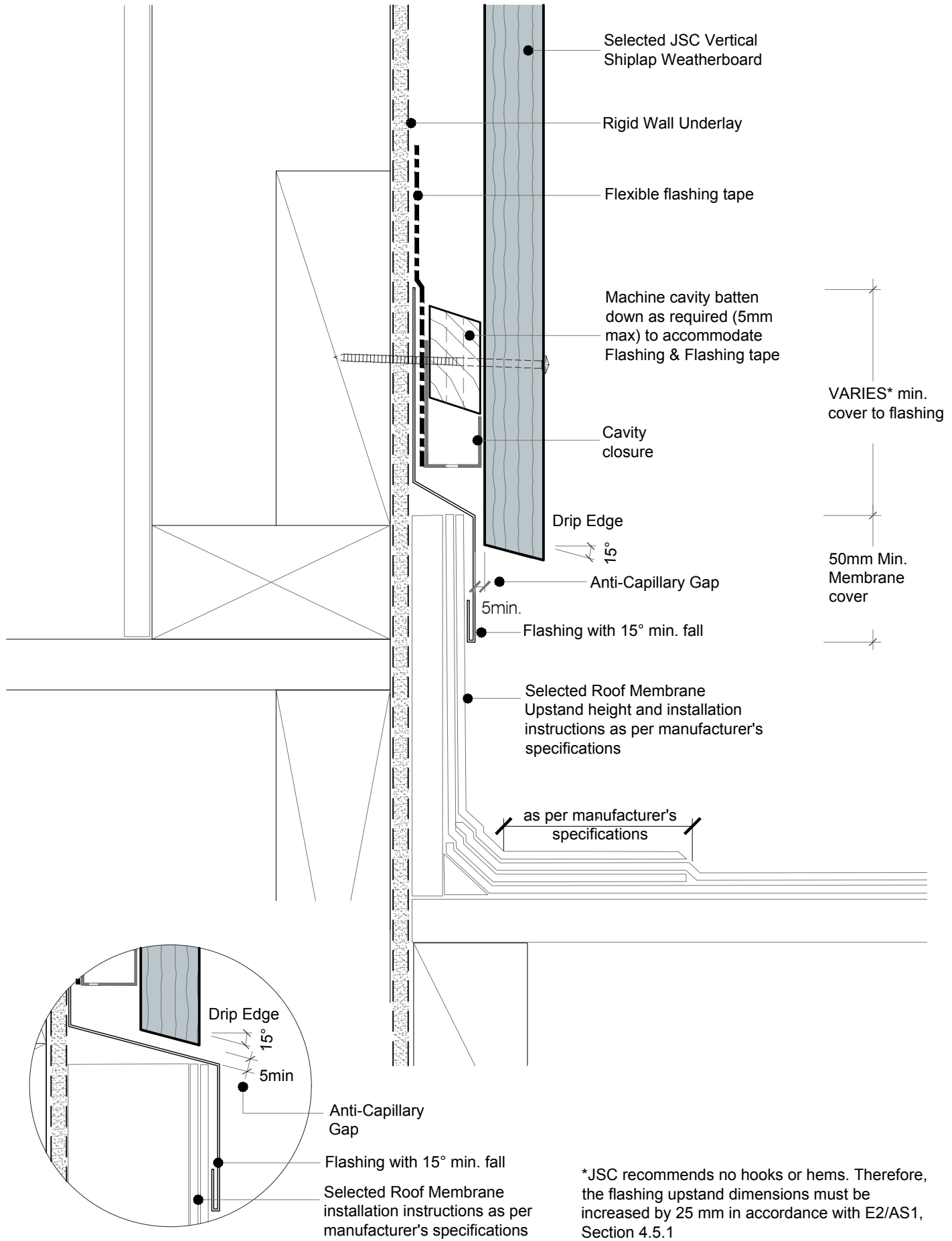
DETAIL NOTE :

- For Very High (VH) and Extra High (EH) wind zones (as defined NZS 3604), a solid batten (non castellated) is required down one side of a significant external corner (change in elevation) to provide pressure isolation between elevations.
- JSC recommends this detail to be used for paint finished weatherboards.
- JSC recommends this detail to be used for pine weatherboards.

• TO BE READ IN CONJUNCTION WITH COMPLETE JSC VERTICLAD SYSTEM LITERATURE

CodeMark
CMNZ30084





• TO BE READ IN CONJUNCTION WITH COMPLETE JSC VERTICLAD SYSTEM LITERATURE

CodeMark
CMNZ30084

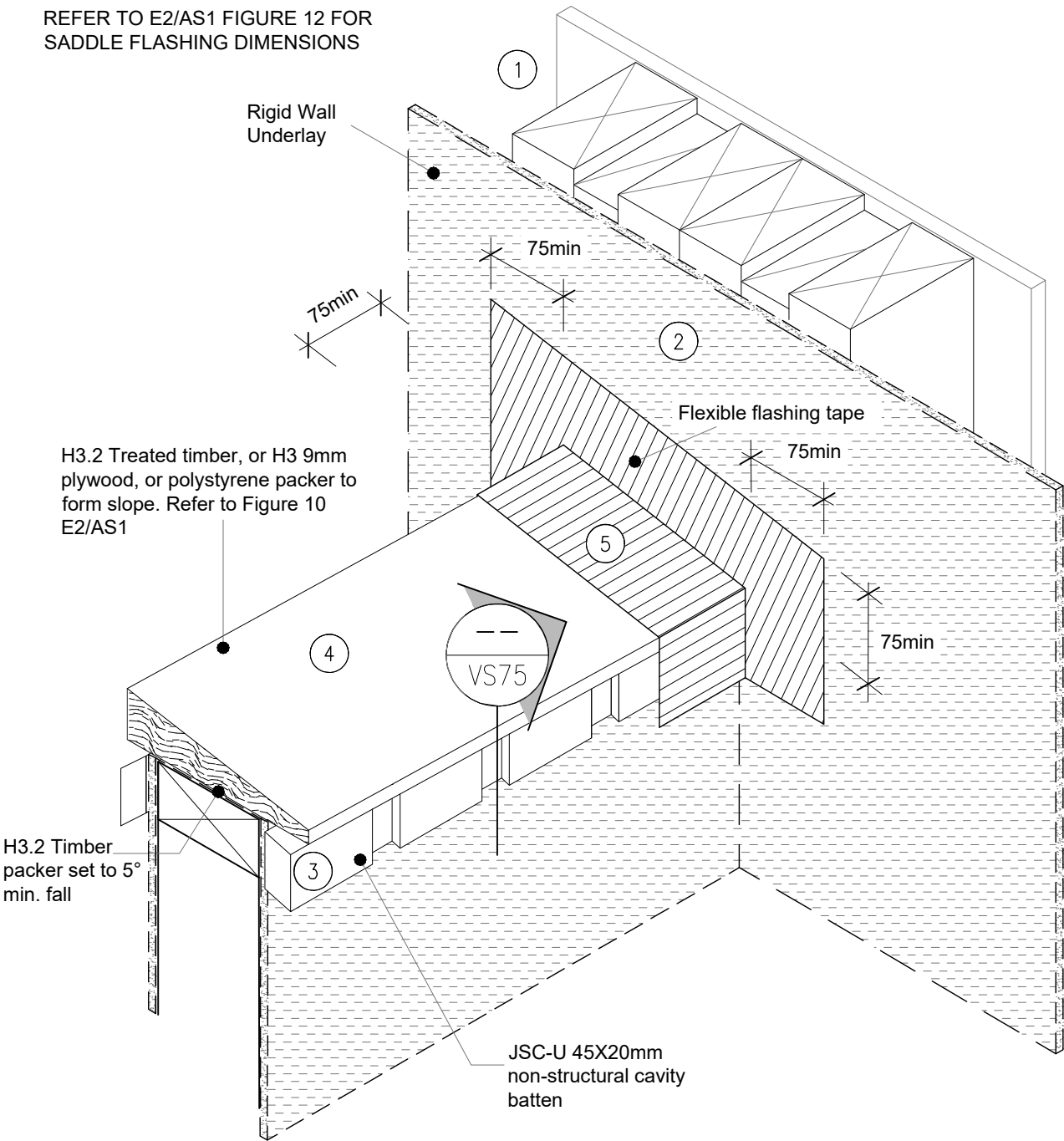


SEQUENCE :

1. Framing
2. Wall Underlay
3. Parapet Cavity battens
4. Packer to form slope
5. Flexible Flashing tape

DETAIL NOTE :

REFER TO E2/AS1 FIGURE 12 FOR
SADDLE FLASHING DIMENSIONS



• TO BE READ IN CONJUNCTION WITH COMPLETE JSC VERTICLAD SYSTEM LITERATURE

CodeMark
CMNZ30084



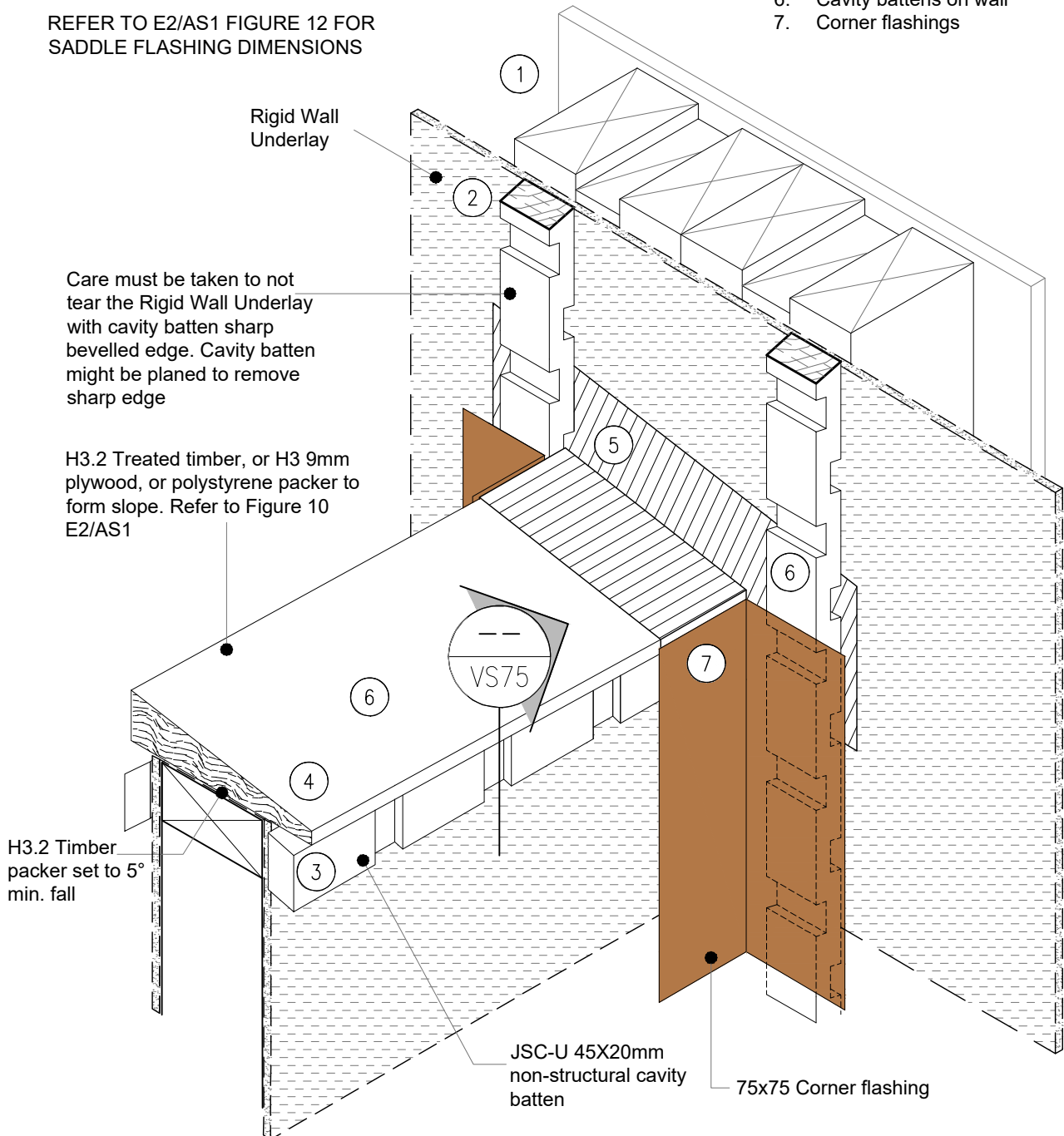
SCAN IT FOR MORE
INFORMATION

SEQUENCE :

1. Framing
2. Wall Underlay
3. Parapet Cavity battens
4. Packer to form slope
5. Flexible Flashing tape
6. Cavity battens on wall
7. Corner flashings

DETAIL NOTE :

REFER TO E2/AS1 FIGURE 12 FOR SADDLE FLASHING DIMENSIONS



• TO BE READ IN CONJUNCTION WITH COMPLETE JSC VERTICLAD SYSTEM LITERATURE

CodeMark
CMNZ30084

JSC PREMIUM ARCHITECTURAL
& BUILDING SOLUTIONS

jsc.co.nz
TechHelp@jsc.co.nz | (09) 412 2812

TYPE
VERTICAL SHIPLAP WB - 20MM CAVITY FIX
NAME
Parapet Saddle Flashing - Stage Two

• DETAILS MAY BE SUBJECT TO CHANGE WITHOUT NOTICE



SCAN IT FOR MORE
INFORMATION

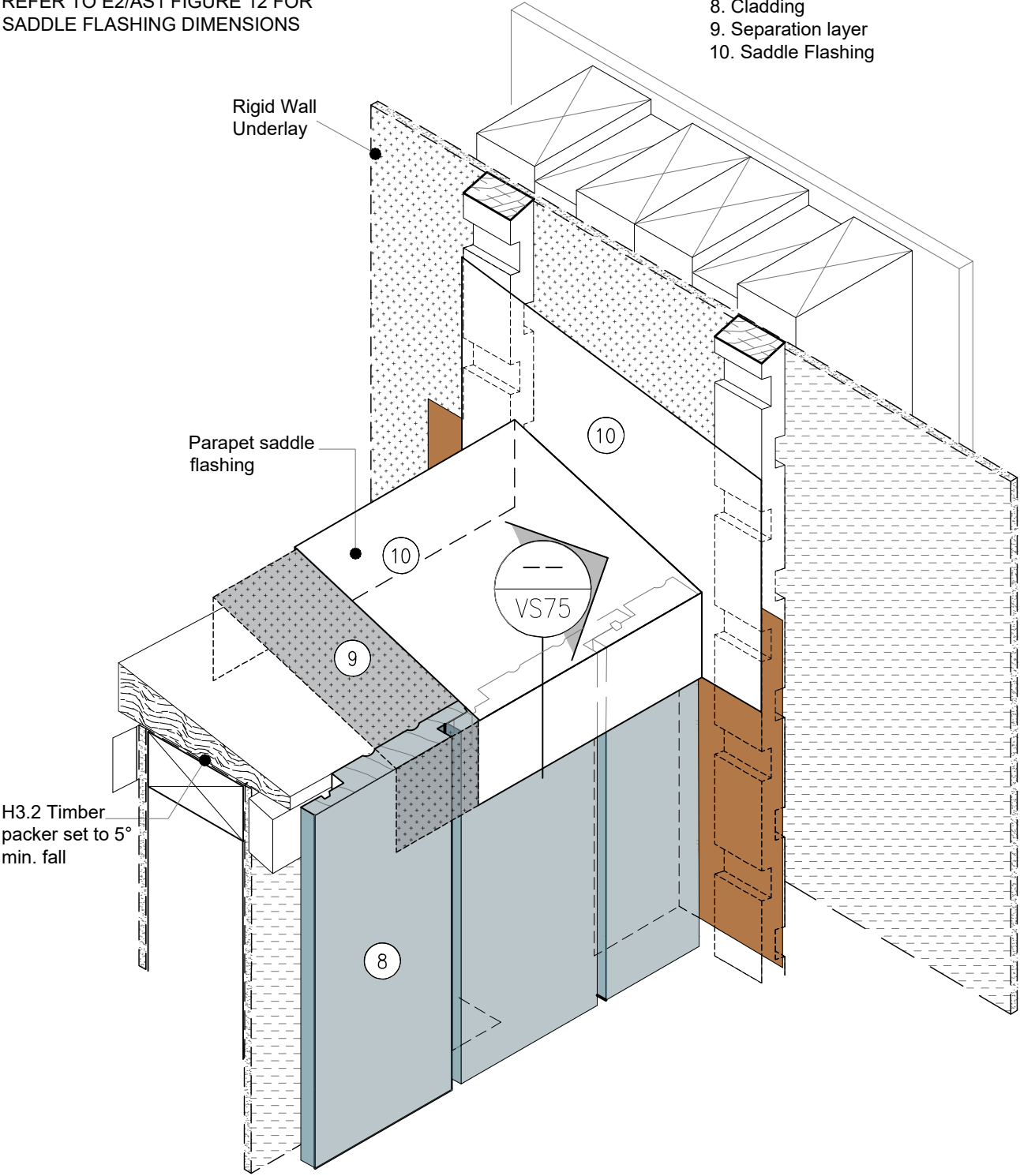
| | |
|---|---------------------------------|
| DRAWING SCALE NTS | ISSUE DATE 24/02/2025 |
| DRAWING NUMBER JSC 20CR VS71b | VERSION 2.5 |

DETAIL NOTE :

REFER TO E2/AS1 FIGURE 12 FOR
SADDLE FLASHING DIMENSIONS

SEQUENCE :

- 8. Cladding
- 9. Separation layer
- 10. Saddle Flashing



• TO BE READ IN CONJUNCTION WITH COMPLETE JSC VERTICLAD SYSTEM LITERATURE

CodeMark
CMNZ30084



SCAN IT FOR MORE
INFORMATION

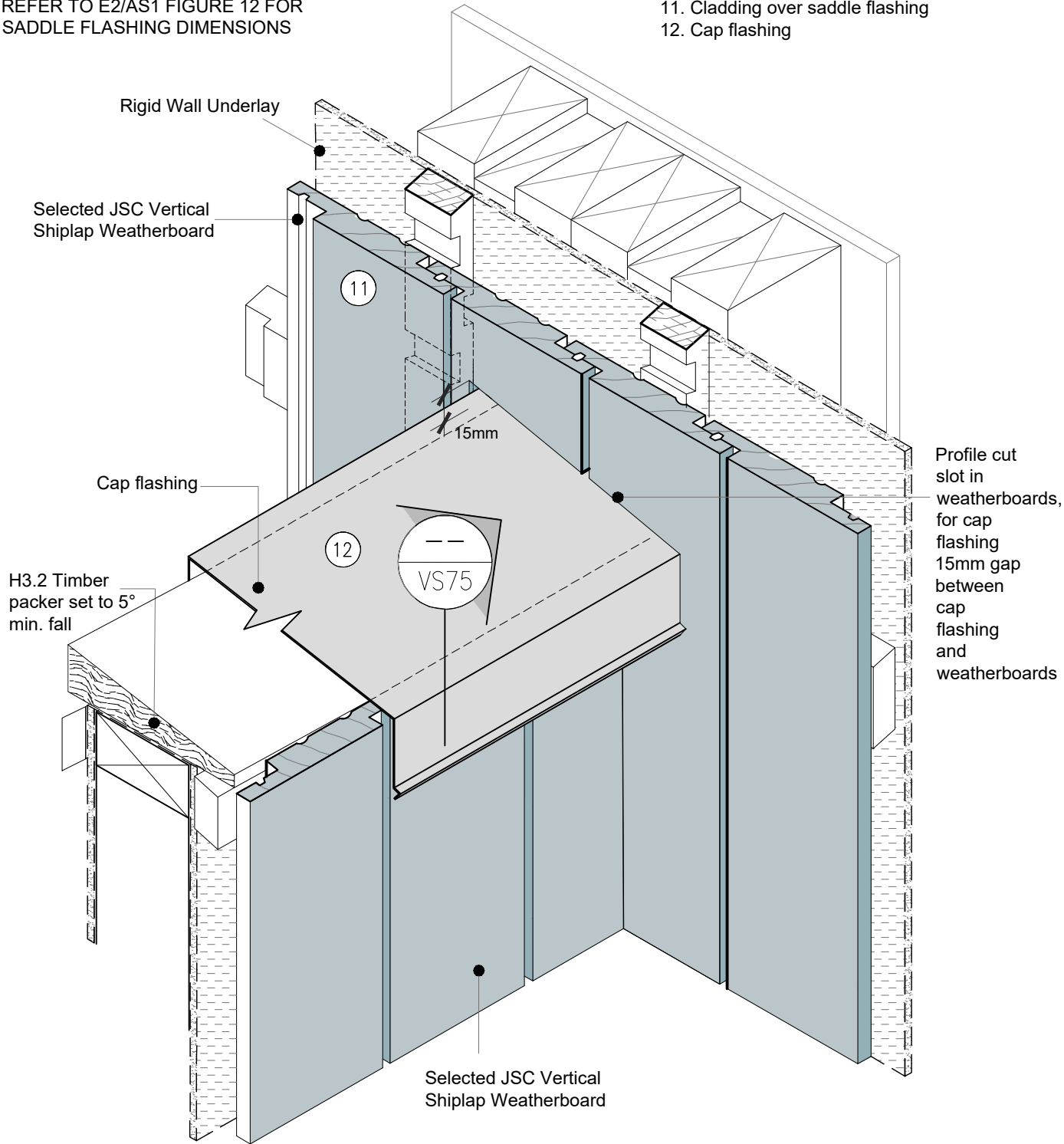
| | |
|----------------------------------|--------------------------|
| DRAWING SCALE NTS | ISSUE DATE 24/02/2025 |
| DRAWING NUMBER JSC 20CR VS71c | VERSION 2.5 |

DETAIL NOTE :

REFER TO E2/AS1 FIGURE 12 FOR
SADDLE FLASHING DIMENSIONS

SEQUENCE :

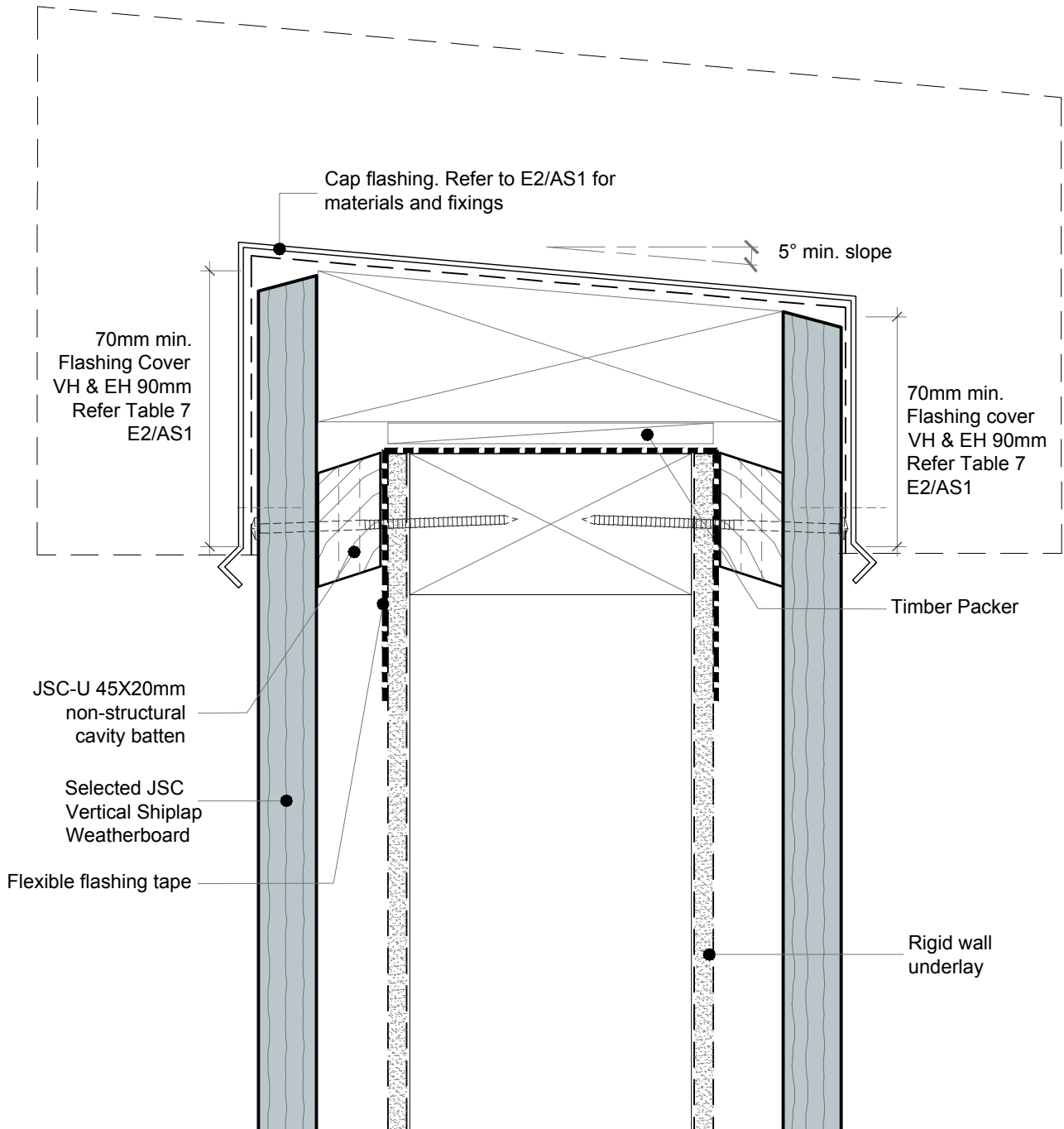
- 11. Cladding over saddle flashing
- 12. Cap flashing



• TO BE READ IN CONJUNCTION WITH COMPLETE JSC VERTICLAD SYSTEM LITERATURE

CodeMark
CMNZ30084

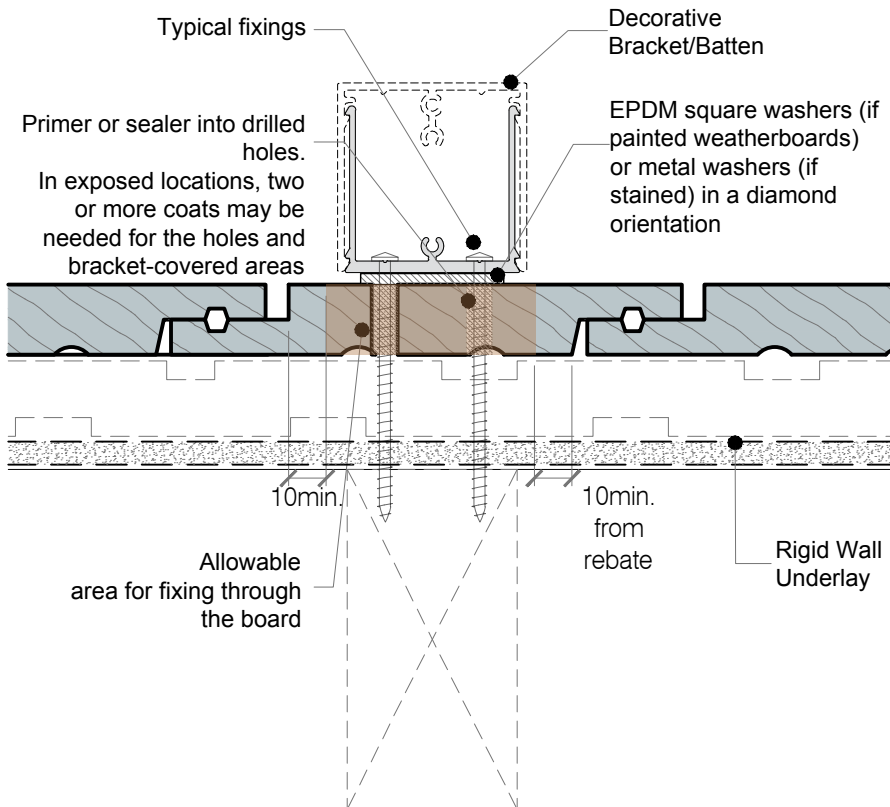
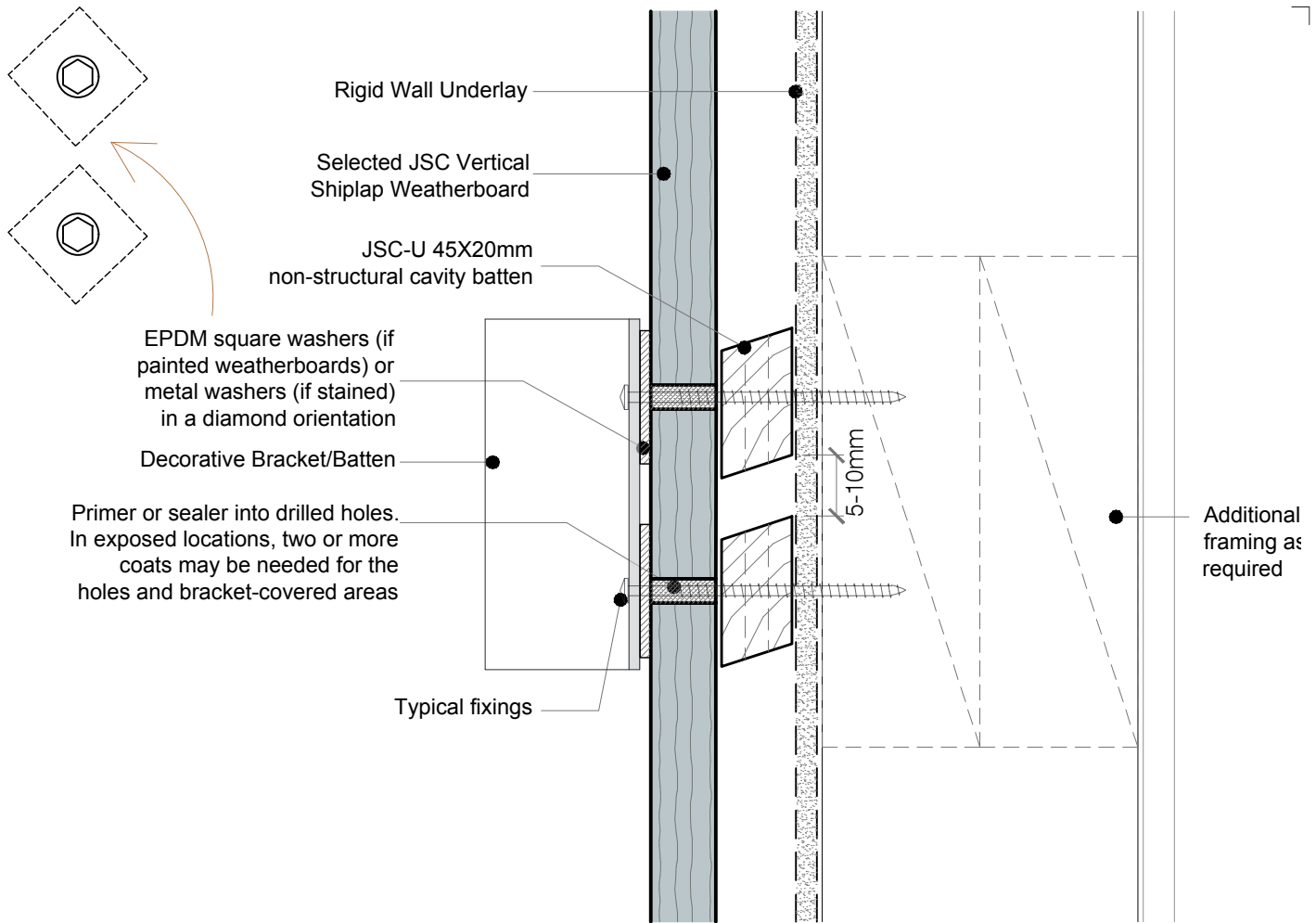




• TO BE READ IN CONJUNCTION WITH COMPLETE JSC VERTICLAD SYSTEM LITERATURE

CodeMark
CMNZ30084





NOTES:

- This detail is to show penetration through the cladding. Framing structure and fixings as per NZS3604:2011 or Specific engineered design.
- Refer to this detail as a principle rather than specific instruction.
- Durable and compatible materials as specified in E2/AS1 Tables 22 and 23.
- If bracket fixings interfere with weatherboard laps, consider an alternative, such as an offset bracket.
- Fixings should be sufficient for the load, with this detail intended for low to medium forces (decorative batten)

Any penetration or contact with the cladding should:

- Be coated for water resistance (e.g., two coats of stain).
- Be inspectable; avoid hidden high-risk penetrations.
- Be maintainable; brackets should be removable for inspection or treatment of weatherboards.

• TO BE READ IN CONJUNCTION WITH COMPLETE JSC VERTICLAD SYSTEM LITERATURE

CodeMark
CMNZ30084

JSC PREMIUM ARCHITECTURAL
& BUILDING SOLUTIONS

jsc.co.nz
TechHelp@jsc.co.nz | (09) 412 2812

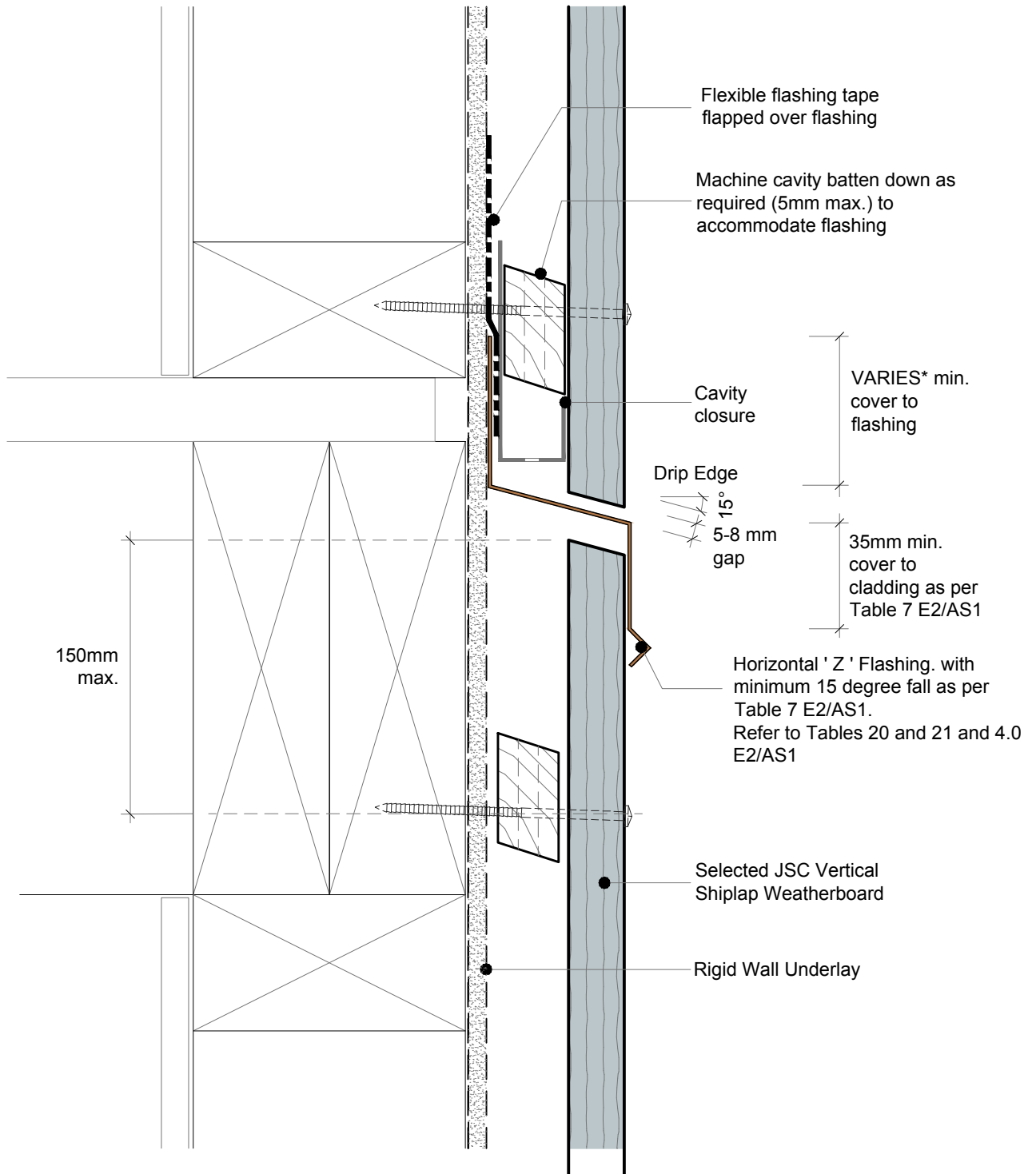
TYPE
VERTICAL SHIPLAP WB - 20MM CAVITY FIX
NAME
Decorative Bracket - Batten Detail

• DETAILS MAY BE SUBJECT TO CHANGE WITHOUT NOTICE



SCAN IT FOR MORE
INFORMATION

| | |
|--|---------------------------------|
| DRAWING SCALE 1:2 @ A4 | ISSUE DATE 24/02/2025 |
| DRAWING NUMBER JSC 20CR VS77 | VERSION 2.5 |

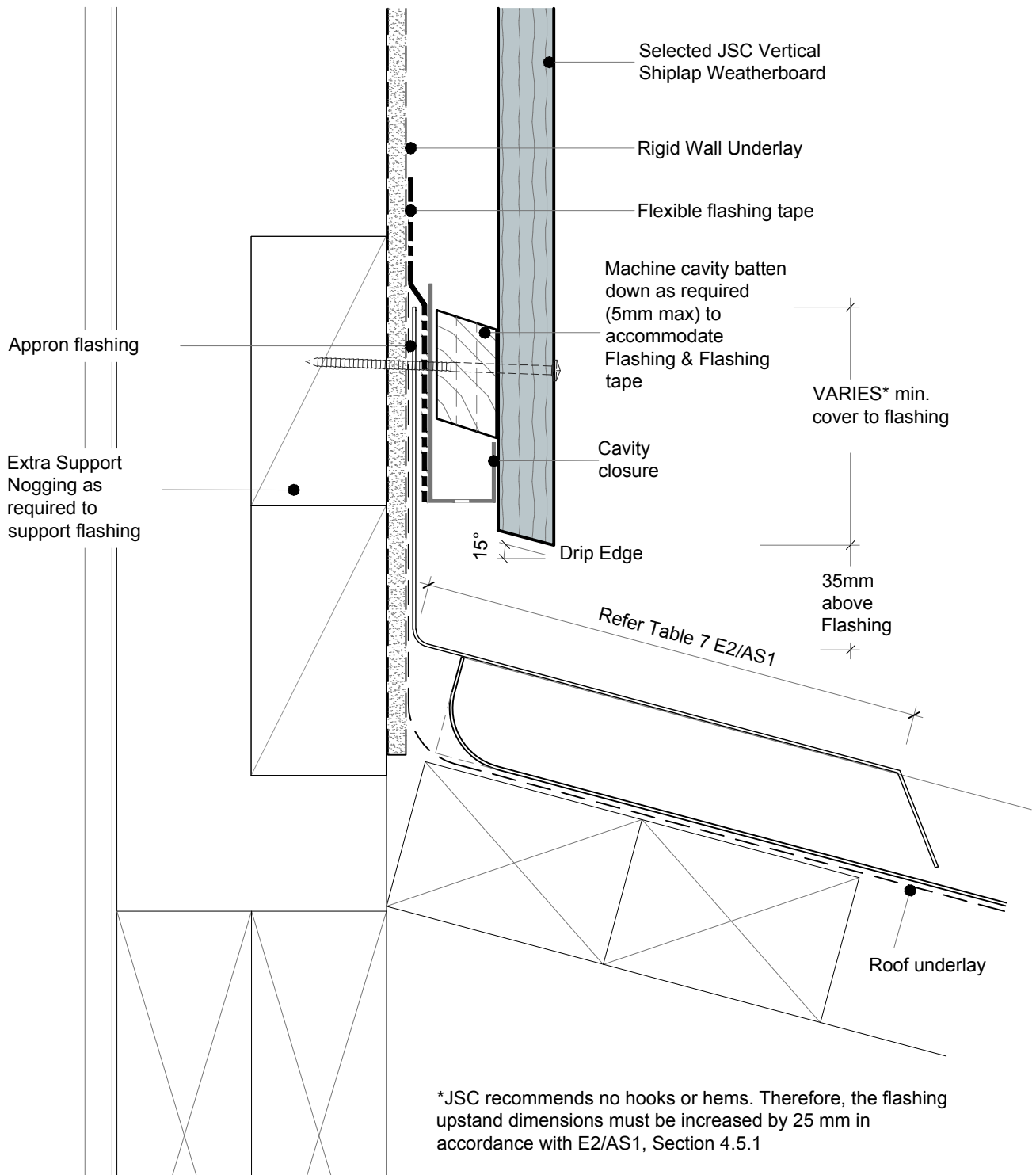


*JSC recommends no hooks or hems. Therefore, the flashing upstand dimensions must be increased by 25 mm in accordance with E2/AS1, Section 4.5.1

• TO BE READ IN CONJUNCTION WITH COMPLETE JSC VERTICLAD SYSTEM LITERATURE

CodeMark
CMNZ30084



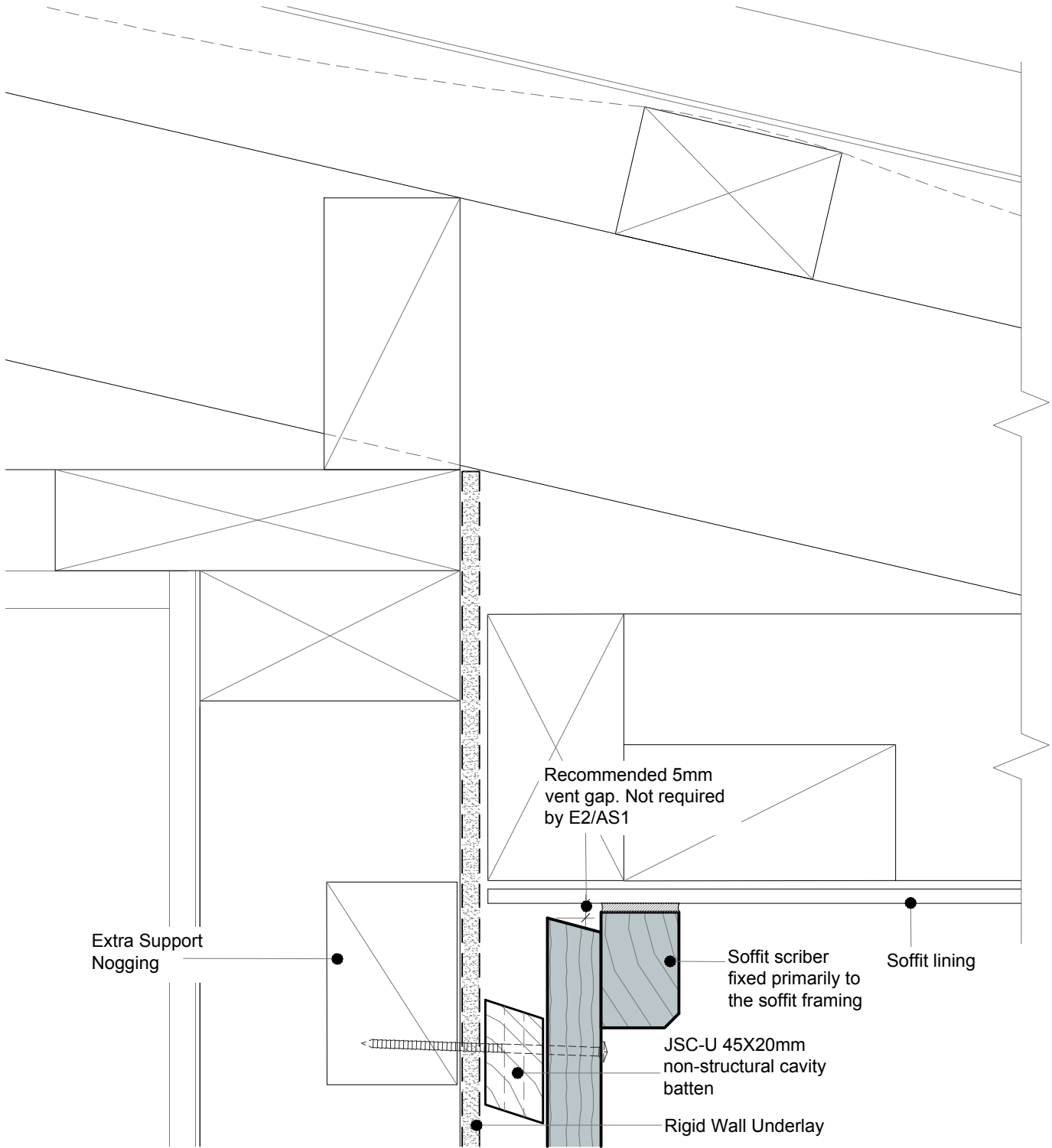


• TO BE READ IN CONJUNCTION WITH COMPLETE JSC VERTICLAD SYSTEM LITERATURE

CodeMark
CMNZ30084



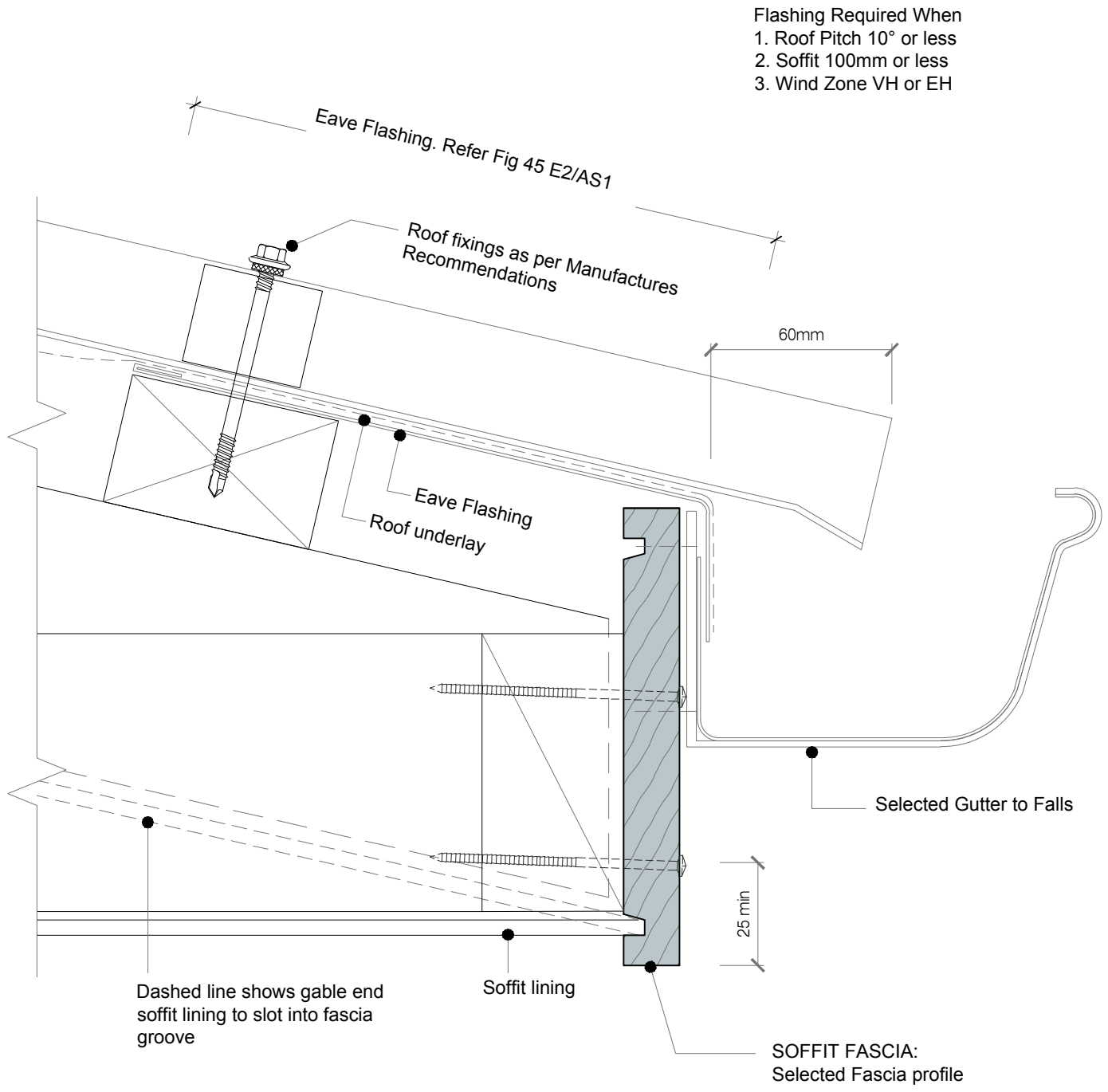
SCAN IT FOR MORE
INFORMATION



• TO BE READ IN CONJUNCTION WITH COMPLETE JSC VERTICLAD SYSTEM LITERATURE

CodeMark
CMNZ30084



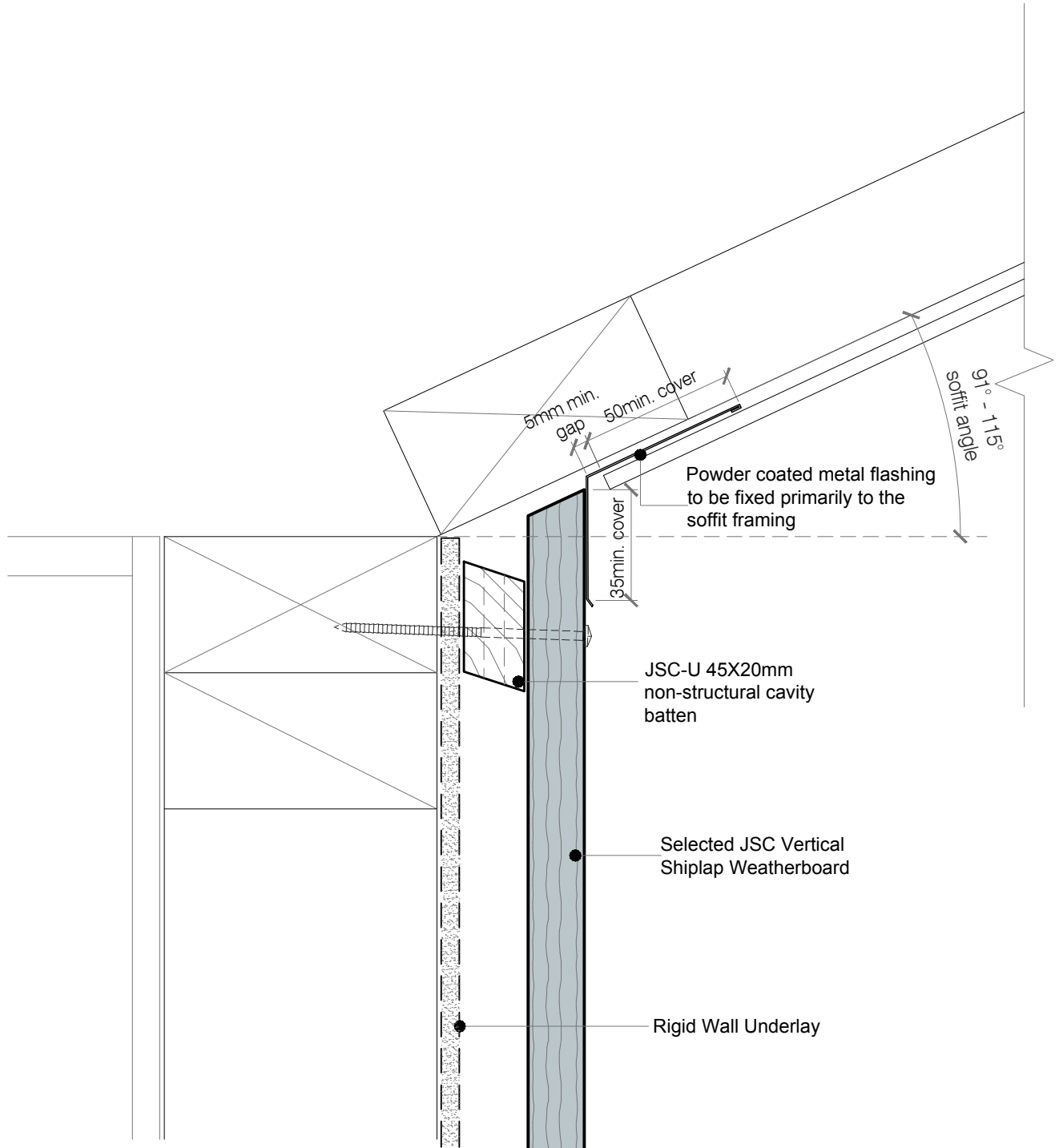


• TO BE READ IN CONJUNCTION WITH COMPLETE JSC VERTICLAD SYSTEM LITERATURE

CodeMark
CMNZ30084



| | |
|---------------------------------|--------------------------|
| DRAWING SCALE 1:2 @ A4 | ISSUE DATE 24/02/2025 |
| DRAWING NUMBER JSC 20CR VS83 | VERSION 2.5 |



• TO BE READ IN CONJUNCTION WITH COMPLETE JSC VERTICLAD SYSTEM LITERATURE

CodeMark
CMNZ30084

JSC PREMIUM ARCHITECTURAL
& BUILDING SOLUTIONS

jsc.co.nz
TechHelp@jsc.co.nz | (09) 412 2812

TYPE
VERTICAL SHIPLAP WB - 20MM CAVITY FIX

NAME
Raking Soffit at Wall

• DETAILS MAY BE SUBJECT TO CHANGE WITHOUT NOTICE



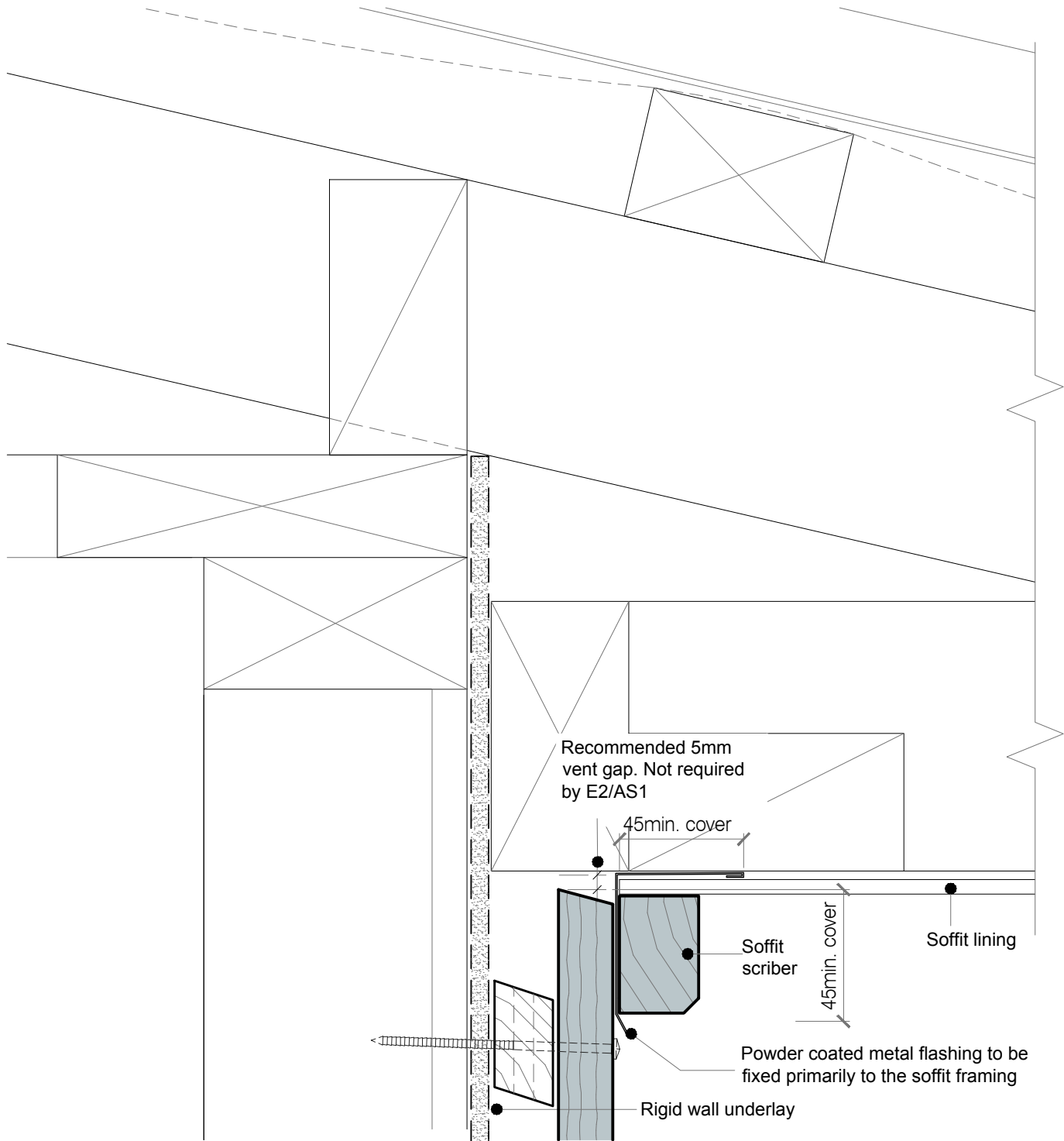
SCAN IT FOR MORE
INFORMATION

DRAWING SCALE
1:2 @ A4

ISSUE DATE
24/02/2025

DRAWING NUMBER
JSC 20CR VS84

VERSION
2.5



- DETAIL NOTES :
- 1. 45° max. fall along soffit junction
 - 2. Refer to BRANZ Build 158-27 - Build Right Soffit Details at Gable Verge

• TO BE READ IN CONJUNCTION WITH COMPLETE JSC VERTICLAD SYSTEM LITERATURE

CodeMark
CMNZ30084

JSC PREMIUM ARCHITECTURAL & BUILDING SOLUTIONS

jsc.co.nz
TechHelp@jsc.co.nz | (09) 412 2812

TYPE
VERTICAL SHIPLAP WB - 20MM CAVITY FIX

NAME
Gable Soffit Detail at Wall

• DETAILS MAY BE SUBJECT TO CHANGE WITHOUT NOTICE

SCAN IT FOR MORE INFORMATION

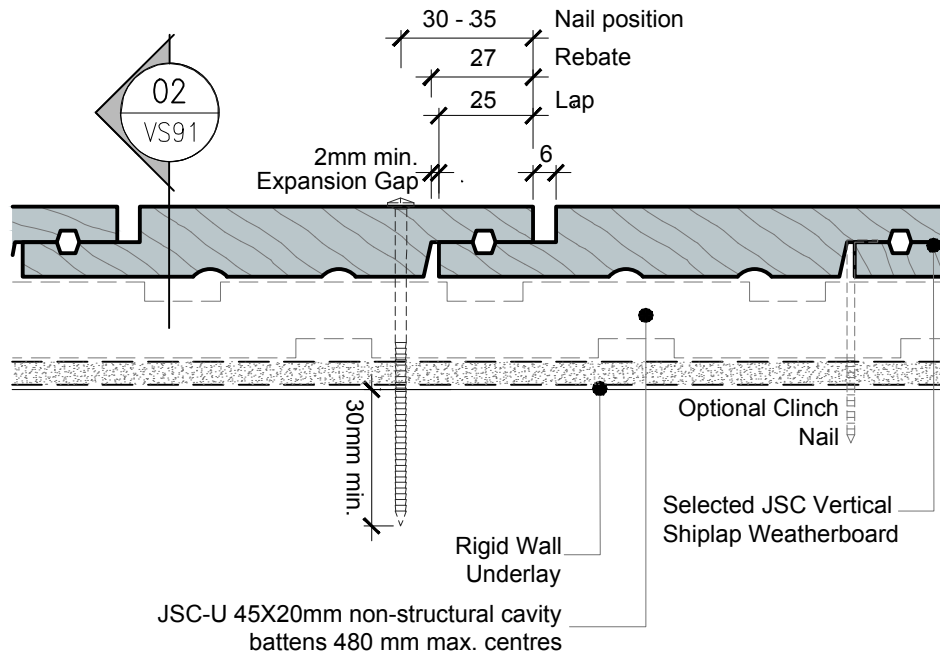
| | |
|---------------------------------|--------------------------|
| DRAWING SCALE 1:2 @ A4 | ISSUE DATE 24/02/2025 |
| DRAWING NUMBER JSC 20CR VS85 | VERSION 2.5 |

Weatherboards:

- Single fix at each cavity batten with annular grooved nails (stainless steel 316 or silicon bronze) as per NZBC E2/AS1 Table 24
- Pre-drill holes approximately 1mm smaller than the nail gauge. Example: For a 75mm nail, use a 2.5mm drill
- Nail with slight (0-2°) upward slope
- Fixings to achieve a minimum of 30mm penetration into the framing
- Minimum 50mm from the ends of boards
- Use an accurate packer in the negative detail. Do not rely on clinch nails for spacing

Cavity battens:

- will be fixed by the cladding fixings, which will penetrate the wall framing. Battens only need temporary fixing until the cladding is fixed (E2/AS1 - Table 24)
- must always be installed sloping away from the framing
- must have a 5-10mm gap between them



Plan Section 01

• TO BE READ IN CONJUNCTION WITH COMPLETE JSC VERTICLAD SYSTEM LITERATURE

CodeMark
CMNZ30084

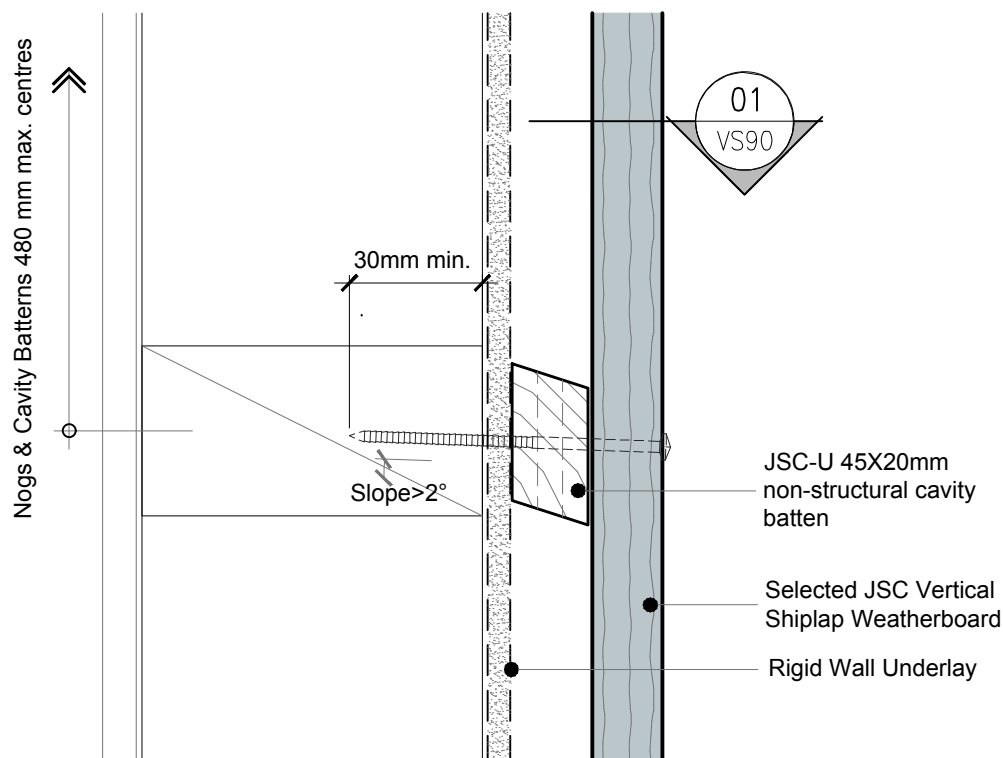


Weatherboards:

- Single fix at each cavity batten with annular grooved nails (stainless steel 316 or silicon bronze) as per NZBC E2/AS1 Table 24
- Pre-drill holes approximately 1mm smaller than the nail gauge. Example: For a 75mm nail, use a 2.5mm drill
- Nail with slight (0-2°) upward slope
- Fixings to achieve a minimum of 30mm penetration into the framing
- Minimum 50mm from the ends of boards
- Use an accurate packer in the negative detail. Do not rely on clinch nails for spacing

Cavity battens:

- will be fixed by the cladding fixings, which will penetrate the wall framing. Battens only need temporary fixing until the cladding is fixed (E2/AS1 - Table 24)
- must always be installed sloping away from the framing
- must have a 5-10mm gap between them



Cross Section 02

• TO BE READ IN CONJUNCTION WITH COMPLETE JSC VERTICLAD SYSTEM LITERATURE

CodeMark
CMNZ30084

JSC PREMIUM ARCHITECTURAL
& BUILDING SOLUTIONS

jsc.co.nz
TechHelp@jsc.co.nz | (09) 412 2812

TYPE
VERTICAL SHIPLAP WB - 20MM CAVITY FIX
NAME
Weatherboard Fixing - Cross Section

• DETAILS MAY BE SUBJECT TO CHANGE WITHOUT NOTICE

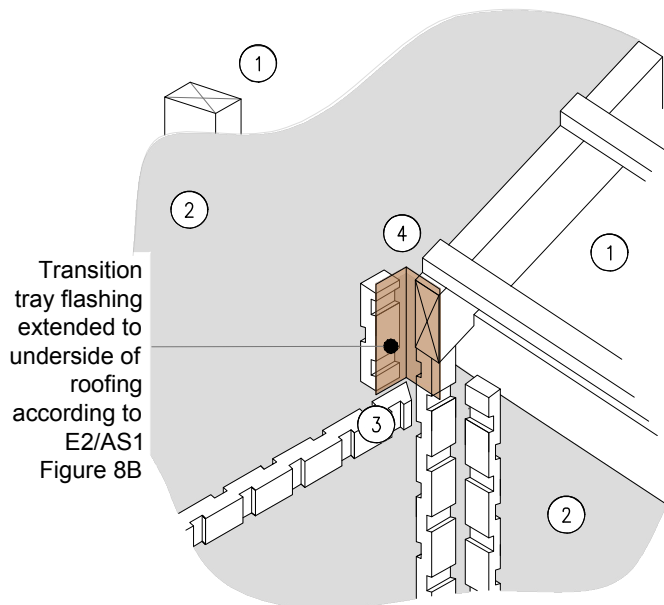


SCAN IT FOR MORE
INFORMATION

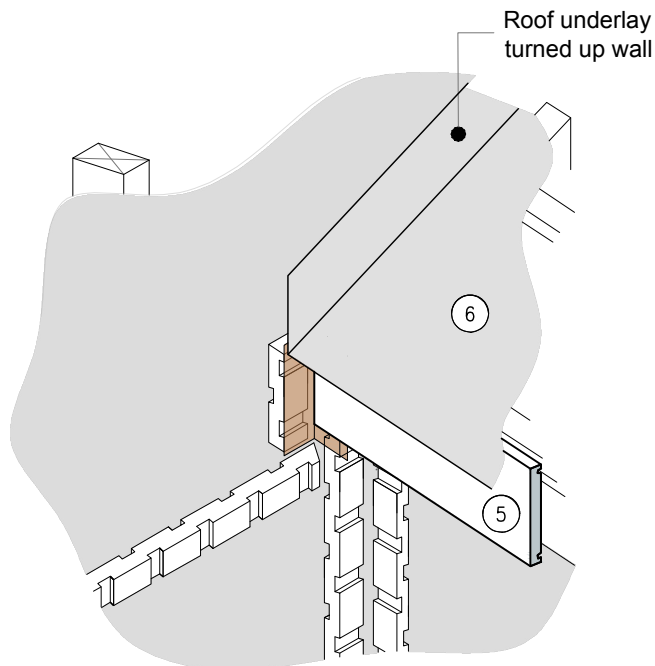
| | |
|---------------------------------|--------------------------|
| DRAWING SCALE 1:2 @ A4 | ISSUE DATE 24/02/2025 |
| DRAWING NUMBER JSC 20CR VS91 | VERSION 2.5 |

SEQUENCE :

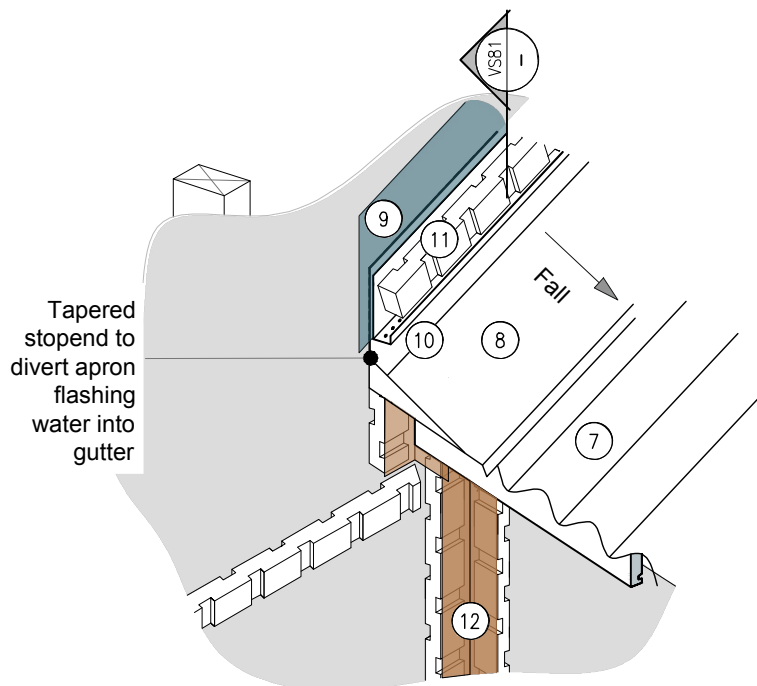
1. Roof and Wall Framing
2. Wall Underlay
3. Cavity Battens
4. Transition Flashing
5. Fascia Board
6. Roof Underlay
7. Roofing
8. Apron Flashing
9. Flexible Flashing Tape
10. Cavity Closure
11. Cavity Battens (above Apron Flashing)
12. Corner Flashing
13. Cladding
14. Gutter



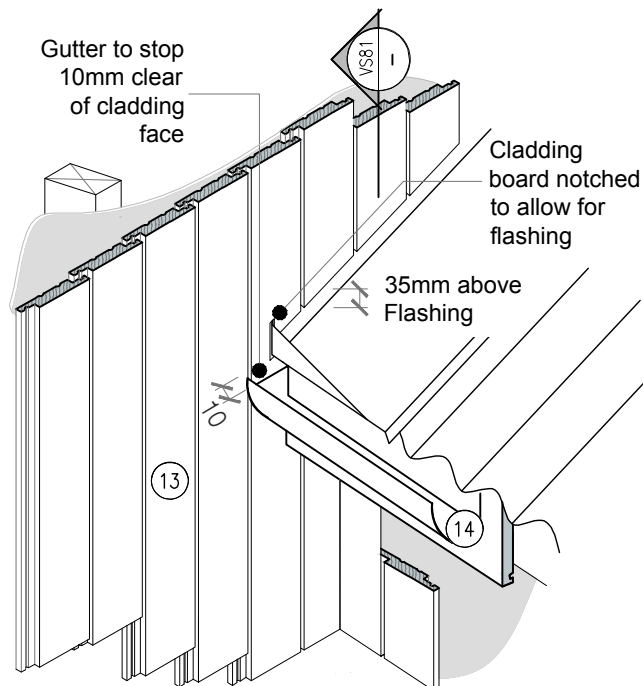
STAGE ONE



STAGE TWO



STAGE THREE



STAGE FOUR

• TO BE READ IN CONJUNCTION WITH COMPLETE JSC VERTICLAD SYSTEM LITERATURE

CodeMark
CMNZ30084

JSC PREMIUM ARCHITECTURAL
& BUILDING SOLUTIONS

jsc.co.nz
TechHelp@jsc.co.nz | (09) 412 2812

TYPE
VERTICAL SHIPLAP WB - 20MM CAVITY FIX
NAME
Apron Flashing Gutter to Wall

• DETAILS MAY BE SUBJECT TO CHANGE WITHOUT NOTICE



SCAN IT FOR MORE
INFORMATION

DRAWING SCALE
1:2 @ A4
ISSUE DATE
24/02/2025

DRAWING NUMBER
JSC 20CR VS92
VERSION
2.5